

BAUMFOLDER
CORPORATION
Quality Bindery Equipment Since 1917



714XLT BATCH COUNTER INSTALLATION & PARTS MANUAL

© 2000 Baumfolder Corporation
All Rights Reserved

WARNING

- Do not operate this machine without all guarding in place.
- Do not make adjustments or perform maintenance on this machine with power on.
- Keep the machine and the work area clean and free of spills to prevent accidents.
- Be sure to replace any safety decals that may have been detached for any reason.

Baumfolder reserves the right to make changes in design or to make additions or improvements in its products without imposing any obligation upon itself to install them on its previously manufactured products. It is recommended that modifications to this equipment not be made without the advice and express written consent of Baumfolder Corporation.

FOLDER IDENTIFICATION

MODEL NO: _____ SERIAL NO: _____

SALES AGENCY: _____

INSTALLED BY: _____ DATE: _____

PHONE NO: _____

Contents

FUNDAMENTAL SAFETY	4
INSTRUCTIONS	8
PARTS	12

FUNDAMENTAL SAFETY INSTRUCTIONS!

The diagrams and descriptions used in these instructions are not necessarily applicable to the specification of the machine supplied. Modifications, made for reasons of technical or operational improvement, are embodied without notice.

FUNDAMENTAL SAFETY INSTRUCTIONS!

These operating instructions are designed to familiarize the user with the machine and its designated use.

The instruction manual contains important information on how to operate the machine safely, properly and most efficiently. Observing these instructions helps to avoid danger, to reduce repair costs and downtimes and to increase the reliability and life of the machine.

In addition to the operating instructions and to the mandatory rules and regulations for accident prevention and environmental protection in the country and place of use of the machine, the generally recognized technical rules for safe and proper working must also be observed.

The following signs and designations are used in the manual to designate instructions of particular importance.

Important



(refers to special information on how to use the machine/plant most efficiently)

Attention



(refers to special information and/or orders and prohibitions directed towards preventing damage)

Danger



(refers to orders and prohibitions designed prevent injury or extensive damage)

1.0 Basic operation and designated use of the machine/plant

1.0.1

The machine /plant has been built in accordance with state-of-the art standards and the recognized safety rules. Nevertheless, its use may constitute a risk to life and limb of the user or of third parties, or cause damage to the machine and to other material property.

1.0.2

The machine/plant must only be used in technically perfect condition in accordance with its designated use and the instructions set out in the operating manual, and only by safety-conscious persons who are fully aware of the risks involved in operating the machine/plant. Any functional disorders, especially those affecting the safety of the machine/plant, should therefore be rectified immediately.

1.0.3

The machine/installation is designed exclusively for paper finishing of minimum and maximum sheet sizes (see corresponding operating instructions). Using the machine/ installation for purposes other than those mentioned above is considered contrary to its designated use. The manufacturer/supplier cannot be held liable for any damage or injury arising from such misuse. The risk of such misuse lies entirely with the user.

Operating the machine within the limits of its designated use also involves observing the instructions set out in the operating manual and complying with the inspection and maintenance directives. The working temperature of the machine should range between 0° and 55° C.

1.1 Organizational measures

1.1.1

The operating instructions must always be at hand at the place of use of the machine/plant, e.g. by stowing them in the tool compartment or tool-box provided for such purpose.

1.1.2

Personnel entrusted with work on the machine must have read the operating instructions and in particular the chapter on safety before beginning work. Reading the instructions after work has begun is too late. This applies especially to persons working only occasionally on the machine, e.g. during setting up or maintenance.

1.1.3

For reasons of security, long hair must be tied back or otherwise secured, garments must be close-fitting and no jewelry - such as rings - may be worn. Injury may result from being caught up in the machinery or from rings catching on moving parts.

1.1.4

Observe all safety instructions and warnings attached to the machine/plant.

1.1.5

See to it that safety instructions and warnings attached to the machine are always complete and perfectly legible.

1.1.6

In the event of safety-relevant modifications or changes in the behaviour of the machine/plant during operation, stop the machine/plant immediately and report the malfunction to the competent authority/person.

1.1.7

Never make any modifications, additions or conversions which might affect safety without the supplier's approval. This also applies to the installation and adjustment of safety devices and valves as well as to welding work on load-bearing elements.

1.1.8

Spare parts must comply with the technical requirements specified by the manufacturer. Spare parts from original equipment manufacturers can be relied to do so.

1.1.9

Report any accident that occurs due to a malfunction of the machine though all prescribed safety precautions were observed directly to our agency or to the Baumfolder service department.

1.2 Selection and qualification of personnel - Basic responsibilities

1.2.1

Employ only trained or instructed staff and set out clearly the individual responsibilities of the personnel for operation, set-up, maintenance and repair.

1.2.2

Make sure that only authorized personnel works on or with the machine.

1.2.3

Work on the electrical system and equipment of the machine/plant must be carried out only by a skilled electrician or by instructed persons under the supervision and guidance of a skilled electrician and in accordance with electrical engineering rules and regulations.

1.2.4

Work on gas fueled equipment (gas consumers) may be carried out by specially trained personnel only.

1.3 Safety instructions governing specific operational phases

1.3.1 Standard operation

1.3.1.1

Avoid any operational mode that might be prejudicial to safety.

1.3.1.2

Take the necessary precautions to ensure that the machine is used only when in a safe and reliable state. Operate the machine only if all protective and safety-oriented devices, such as removable safety devices, emergency shut-off equipment, sound-proofing elements and exhausters, are in place and fully functional.

1.3.1.3

Check the machine/plant at least once per working shift for obvious damage and defects. Report any changes (incl. changes in the machine's working behaviour) to the competent organization/person immediately. If necessary, stop the machine immediately and lock it.

1.3.1.4

Before starting up or setting the machine/plant in motion, make sure that nobody is at risk.

1.3.2

Special work in conjunction with utilization of the machine/plant and maintenance and repairs during operation; disposal of parts and consumables.

1.3.2.1

Always press the emergency (Not-Stop) button first, if you stop the machine for adjustments or maintenance work which must not be done while the machine is in operation.

1.3.2.2

For extensive maintenance or repair work, turn off the main power supply.

1.3.2.3

After making adjustments or after doing maintenance or repair work, always make sure that all tools or other objects are removed from the machine. Otherwise they might fall into the machine, causing severe damage or injuries.

1.3.2.4

Keep the floor around the entire machine clean. Immediately clean any oil, grease or paint spills up off the floor. Remove tools, cleaning cloths or paper scraps from all work areas.

1.3.2.5

Never operate a folding machine without buckle plates or deflectors since these are protective as well.

1.3.2.6

Never clean moving parts of the machine (rollers, shafts) or remove any test sheets, spoiled sheets or bits of paper in such areas.

1.3.2.7

Observe the adjusting, maintenance and inspection activities and intervals set out in the operating instructions, including information on the replacement of parts and equipment. These activities may be executed by skilled personnel only.

1.3.2.8

Brief operating personnel before beginning special operations and maintenance work, and appoint a person to supervise the activities.

1.3.2.9

If the machine/plant is completely shut down for maintenance and repair work, it must be secured against inadvertent starting by:

- locking the principal control elements and removing the ignition key and/or
- attaching a warning sign to the main switch.

1.4.1 Electric energy

1.4.1.1

Use only original fuses with the specified current rating. Switch off the machine/plant immediately if trouble occurs in the electrical system.

1.4.1.2

If provided for in the regulations, the power supply to parts of machines and plants, on which inspection, maintenance and repair work is to be carried out must be cut off. Before starting any work, check the de-energized parts for the presence of power and ground or short-circuit them in addition to insulating adjacent live parts and elements.

1.4.1.3

The electrical equipment of machines/plants is to be inspected and checked at regular intervals. Defects such as loose connections or scorched cables must be rectified immediately.

1.4.1.4

Necessary work on live parts and elements must be carried out only in the presence of a second person who can cut off the power supply in case of danger by actuating the emergency shut-off or main power switch. Secure the working area with a red-and-white safety chain and a warning sign. Use insulated tools only.

1.4.1.5

Only unplug or plug electrical connectors if the main switch has been disconnected.

1.4.1.6

Only connect the folding units and no machines of other brands to the existing connectors. Any electrical connection of Baumfolder folding machines with other brands needs our express consent.

1.4.1.7

For electrical connection, observe the prescribed admissible voltage and frequency.

1.4.1.8

Keep switch cabinets closed.

1.4.2

Oil, grease and other chemical substances

1.4.2.1

When handling oil, grease and other chemical substances, observe the product-related safety regulations.

KIT INSTALLATION

CAUTION: BE SURE THE FOLDER IS TURNED OFF AND UNPLUGGED FROM THE AC POWER BEFORE REMOVING ANY GUARDS AND STARTING THE INSTALLATION.

WARNING: IT IS RECOMMENDED THAT YOU HAVE A QUALIFIED SERVICE PERSON PERFORM THE FOLLOWING PROCEDURE BECAUSE OF THE DANGER FROM HAZARDOUS MOVING PARTS, ELECTRICAL SHOCK (SEE CAUTION ABOVE) AND DAMAGE TO THE FOLDER. HOWEVER IF YOU WISH TO PROCEED ON YOUR OWN, USE EXTREME CARE. BAUMFOLDER CORPORATION ASSUMES NO RESPONSIBILITY FOR DAMAGE CAUSED TO YOUR FOLDER OR PERSONAL INJURY.

1. Remove the infeed table air and vacuum hoses from the manifold block on the right side of the folder frame. Note the orientation of the hoses for re-installing.
2. Remove the infeed table and carefully lay it upside down on a stable flat surface.
3. Apply a strip of Teflon tape to the threads of the plastic elbow adapters. Screw them into each side of the solenoid valve so that the barbed end are out towards the electric junction box. Remove the two top bolts (when IN is to your left) and attach the mounting bracket. (Figure 1)

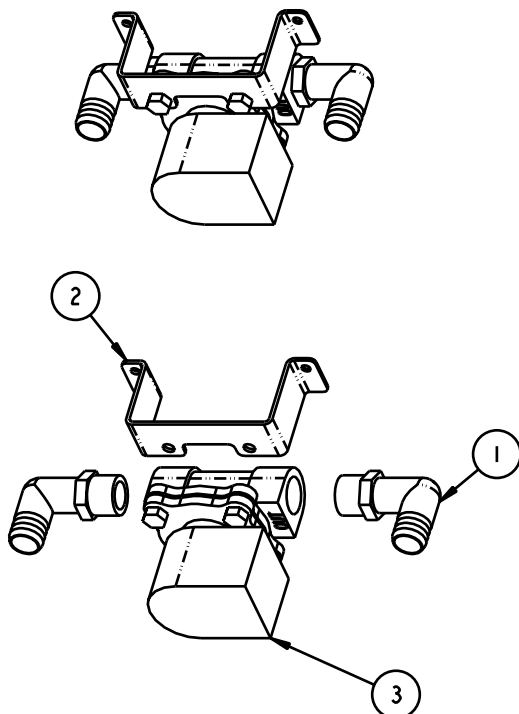


Figure 1

4. Carefully remove the two metric socket head cap screws and mount the vacuum solenoid assembly. (Figure 2) Re-insert and tighten the two metric socket head cap screws.

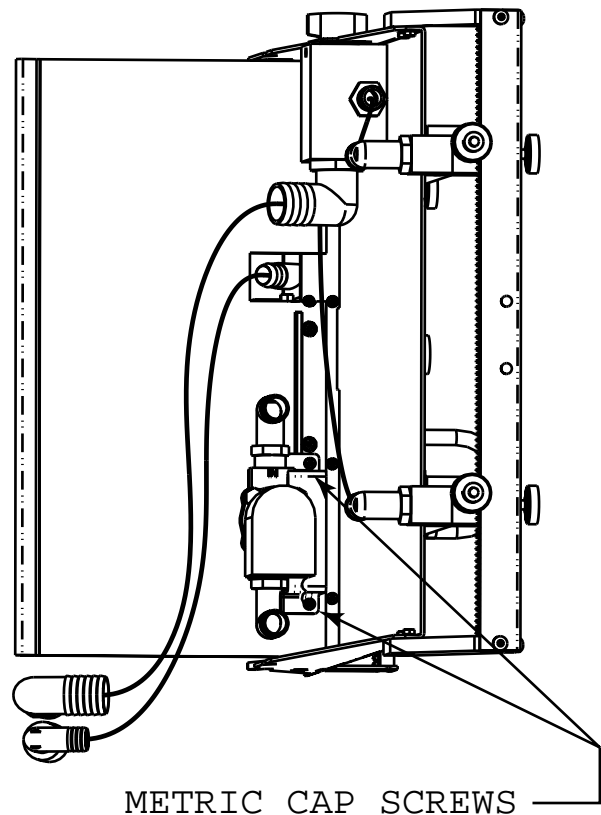


Figure 2

5. Remove the vacuum hose from the adapter on the vacuum feed wheel assembly and replace with the shorter of the new hoses. The loose end of the new hose is to be attached to the adapter on the "IN" side of the vacuum solenoid. Attach the other new hose to the "OUT" side of the vacuum solenoid, add the manifold adapter from the old hose to the loose end.
6. Remove the four screws that attach the right side cover to the frame. Carefully remove the right side cover. You will notice that the air and vacuum hoses inside the cover will need to be removed from the manifold block. Observe which hose goes to which adapter on the block, and remove them.
7. Lay the right side cover on a protected flat surface so that you do not scratch or mar the plastic surface. You are now going to use the mounting block to locate the holes (Figure 3) that you will need to drill for mounting the counter support assembly. After marking the holes, remove the backing plate and drill your four holes using a 0.217 drill bit.

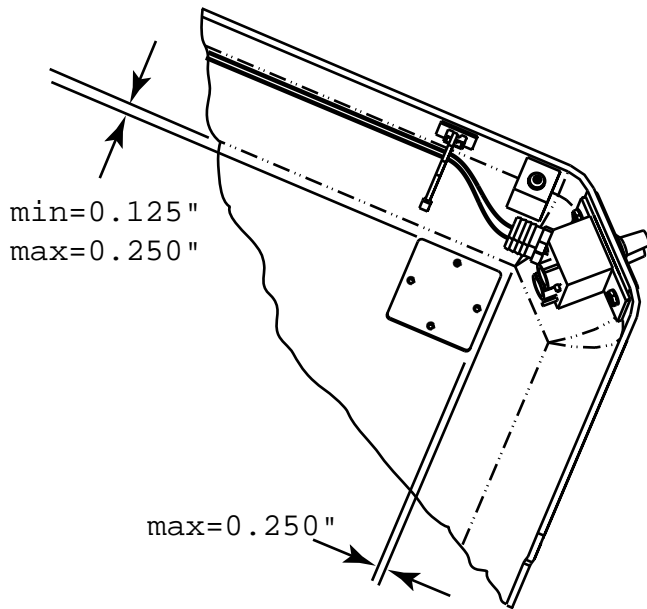


Figure 3

8. Mount the swivel base to the outside of the side guard using the four screws provided(Figure 4).

Warning: Make certain that the swivel base is below the radius of the curve of the side guard or beakage of the guard could take place.

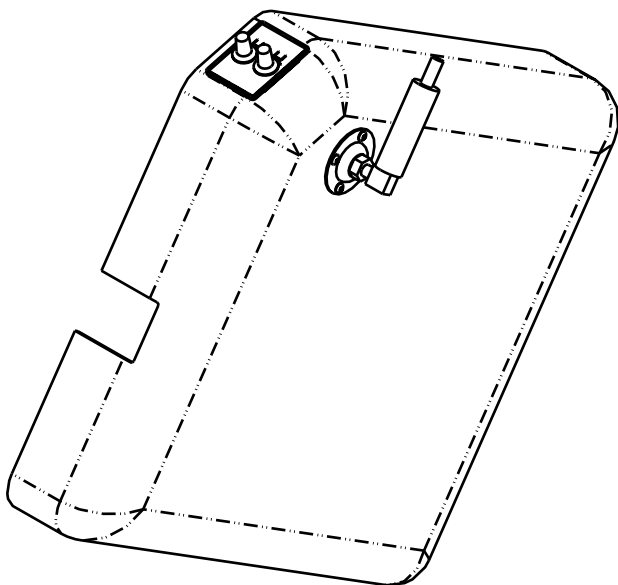


Figure 4

9. Remove the thumb screw on the top section of the mounting post and insert the mounting post on the bottom of the counter fully into the hole. Reinstall and tighten the thumb screw in the top section of the mounting post(Figure 5).

10. Adjust the counter for a comfortable viewing angle and tighten all thumb screws and jam nuts.

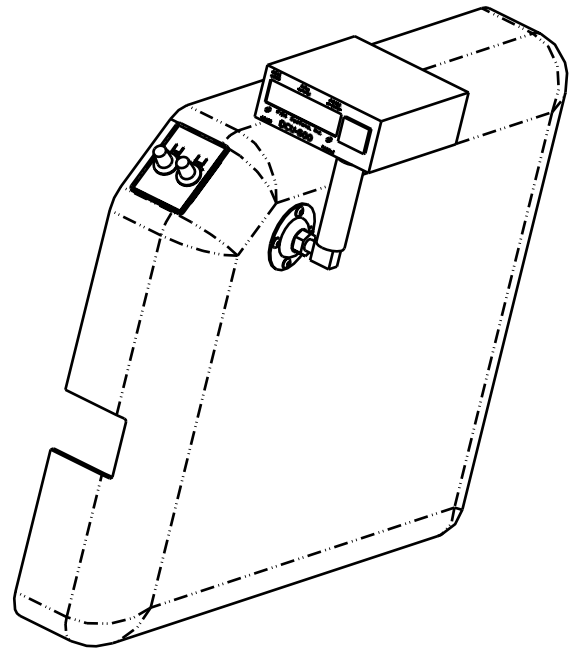


Figure 5

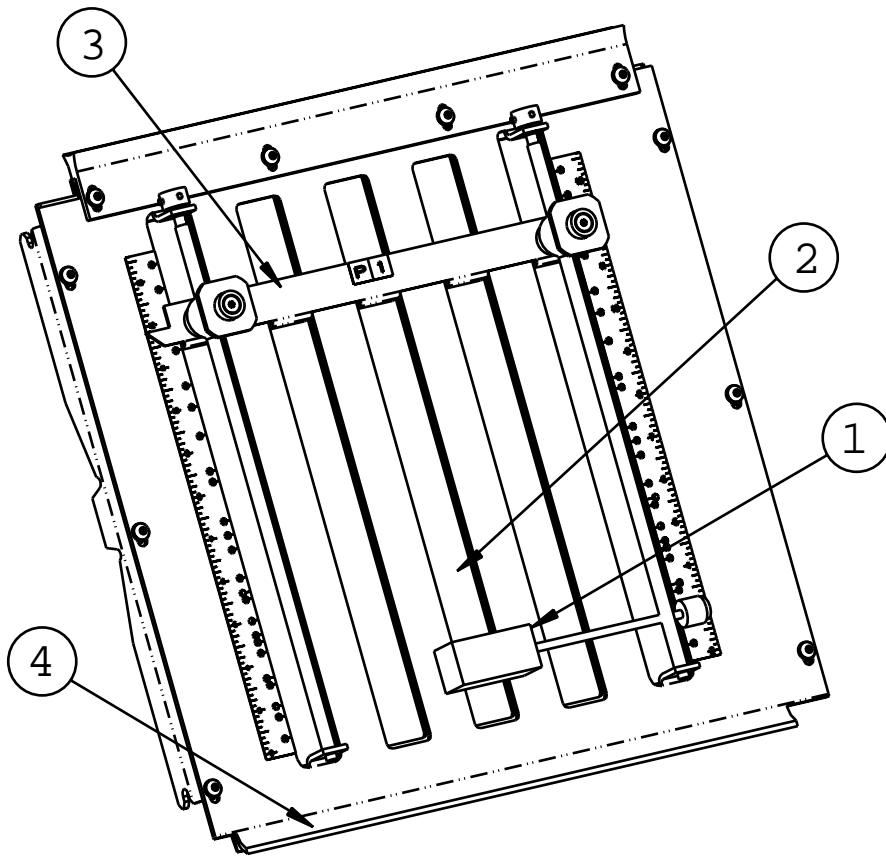
11. Reconnect the air and vacuum hoses to the manifold block on the side of the folder frame. **Double check to make sure that the hoses have been reconnected correctly.** Replace the guard to the right side of the folder and secure the cover screws.

12. Reinstall the infeed table and re-attach the air and vacuum hoses to the manifold block.

13. Connect the scanner connector (white nylon) to the mating connector on the counter then connect the solenoid assembly connector to the circular connector on the counter. See Figure 6 for placement of the scan sensor.

14. Connect (plug in) the folder and the counter to a well grounded 115 VAC outlet.

15. Turn on the counter with the switch located in the rear of the unit. NOTE: The solenoid will energize for a short period each time the counter is turned on. Reset the counter (see reset instructions). Thank you, and enjoy the convenience and increased productivity your DCU-600 batch counter will provide.



Connect the scanner(Figure 6-1) so that the sensor is unobstructed in a cut out(Figure 6-2), between the sheet stop(Figure 6-3) and the nose(Figure 6-4) of the #1 fold pan.

Figure 6

OPERATING THE COUNTER

ABOUT THE DISPLAYS

The display is a multi function display which is normally used to show the total piece count, indicated by the red LED (small dot) under the word PIECE COUNT. The other functions are listed below.

1. Display the TOTAL BATCHES (number of batches completed).
2. Display PIECES IN BATCH (number of pieces processed in the present batch).

The desired information is selected by pressing the button labeled "TOGGLE". A red LED under the words "PIECE COUNT", "TOTAL BATCHES" or "PIECES IN BATCH" will show which is being displayed.

RESET BUTTON (front lower left)

With the reset button on the front, and to avoid accidental reset. The reset button must be held in for approximately 1 second. The PIECE COUNT will zero, indicating that the unit was reset. Reset also clears the TOTAL BATCHES. If the machine is running, the RUNNING RATE is not effected by reset.

SETTING THE BATCH

Press the + or - buttons to rotate the digits in the thumbwheel windows to the desired batch amount.

Example: To batch in groups of 250. The digits should be set to 250.

To disable the batch feature set the thumbwheels to 000.

OPERATING THE DCU-600

To use the DCU-600 as a counter only:

Clear the unit (if required) To clear the batch amount set the thumbwheels to 000.

To use as a batch counter / totalizer:

Clear the unit (if required) Set a batch amount. The DCU-600 is now ready to operate as a batch counter and will automatically operate the vacuum solenoid whenever the preset batch amount is reached. The batching device will be activated for a preset time determined by the running speed. The on/off switch is at the rear of the DCU-600, ON is the up position

and OFF is in the down position. The connectors for the PHOTO HEAD (scanner) and the BATCHER (Valve, Lift Wheel etc) are locking connectors. They cannot be installed incorrectly. The PHOTO HEAD input is a 4 pin white nylon or 5 pin round male connector and the BATCHER is a 4 pin round black male connector.

The current rating of the BATCHER fuse may depend on the type of device supplied. Replace only with the type supplied with the DCU-600. The fuse on models with modular power connectors is mounted internal. The fuse in these models should only be replaced by qualified personal.

CAUTION: NEVER EXCEED THE FUSE RATING AS THIS COULD CAUSE FIRE, PERSONAL INJURY OR PERMANENT DAMAGE TO THE EQUIPMENT

Connect the DCU-600 ONLY to a 115 volt 15 amp GROUNDED outlet for safety and correct operation.

BATTERY REPLACEMENT

Over a period of time and usage the batteries in all electronic equipment should be replaced so the unit will continue to function properly. The DCU-600 uses the batteries to protect the stored data when the power is off. We recommend replacing the batteries every two (2) years. We suggest writing the date of purchase in the manual and on the bottom of the case. As a reminder, record the battery replacement date (two years from purchase) in both locations. You should up-date the replacement date every two years, and have the batteries replaced by qualified personnel.

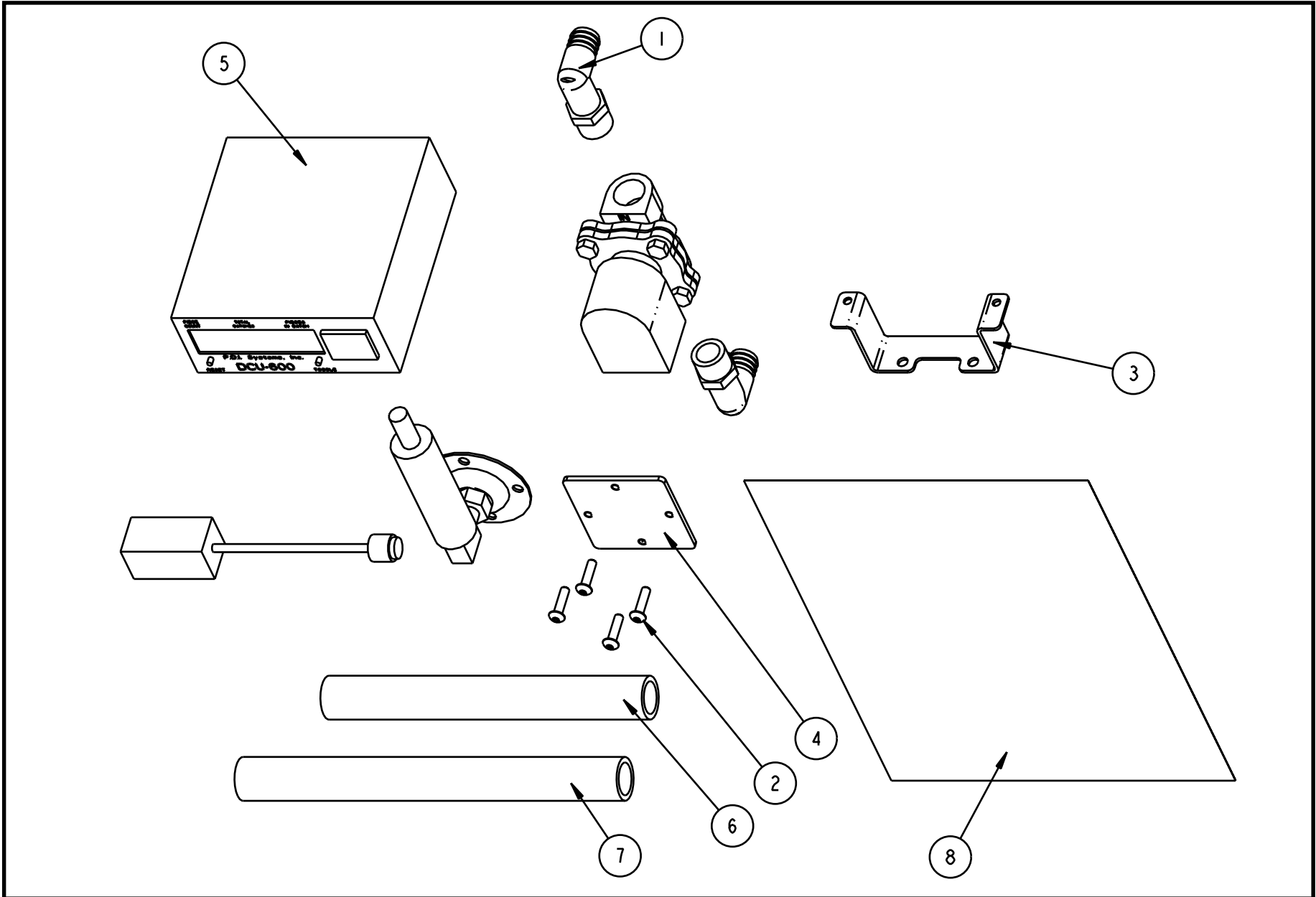
Use **ONLY DURACELL** alkaline size AA battery.

-----**CAUTION**-----

The unit **MUST BE** unplugged from the 115 volt outlet before attempting to replace the batteries or any procedure which requires the removal of the cover on the unit. The unit should not be plugged back into a power outlet until the cover has been secured back on the unit; **OTHERWISE, YOU MAY EXPERIENCE AN ELECTRICAL SHOCK** or damage the unit.

SCANNER (optical sensor) The reflective modulated scanner senses material by reflection of light (from the scanner) off of the material being counted. This is usually mounted on a fold plate of the folder, scanning between the frame. A magnet holds the scanner in place. Two type of scanners are available, modulated and non-modulated

CAUTION: The DCU series of counters and batch counters will not work with the old style U shaped incandescent break beam photo arm.



DESCRIPTION: **BATCH COUNTER KIT**
UNIT NAME: **714XLT BATCH COUNTER KIT**

ASSEMBLY NUMBER: **268-322-BG-01**

REV:
SHEET 1 OF 2

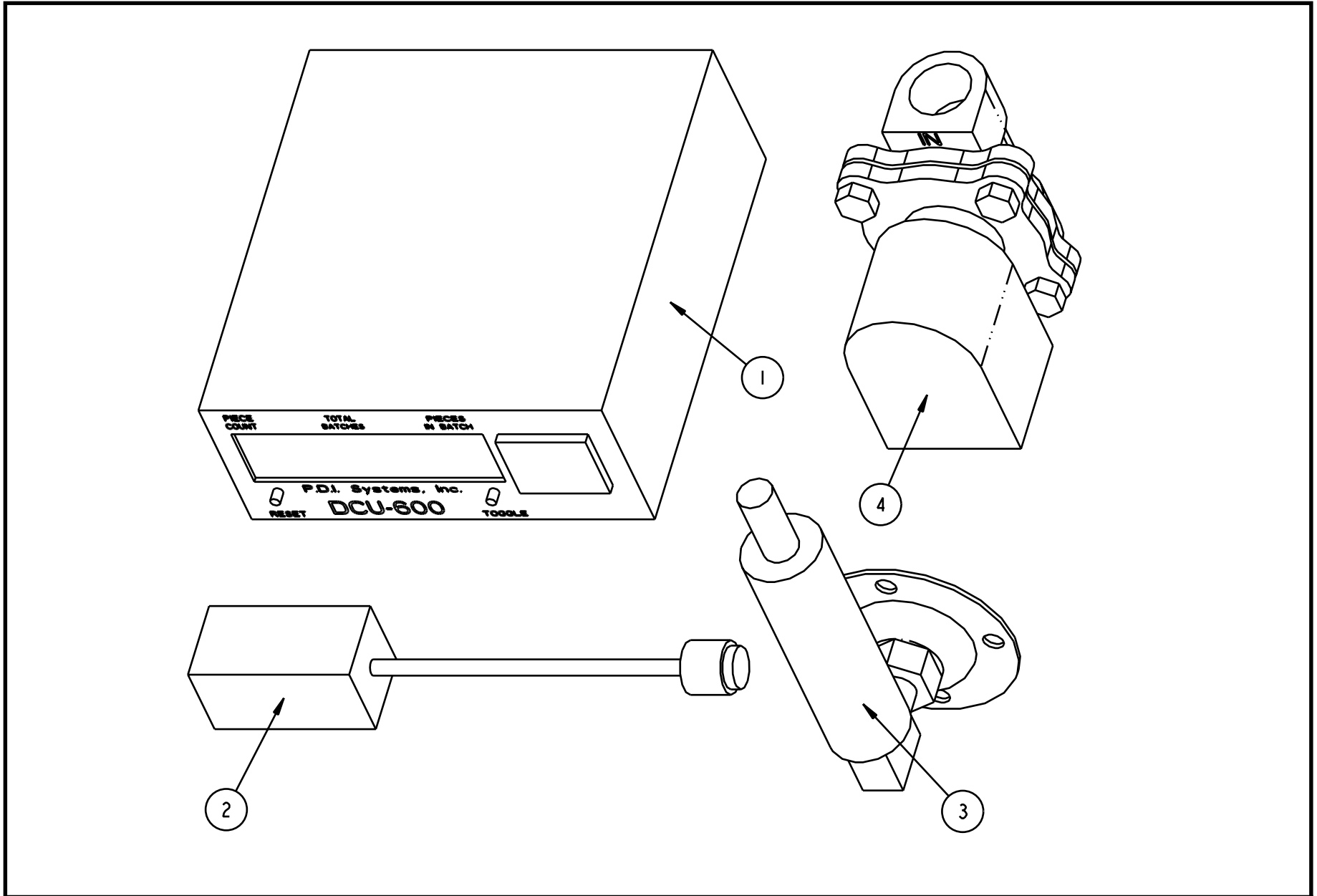
268-322-BG-01					
ITEM #	PART DESCRIPTION	PART #	QTY.	FACTORY CHECK	CUSTOMER CHECK
1	FITTING-HOSE ADAPT ELL .50 x .631705	631705	2		
2	SCREW-BUT HD CAP M5X8 BLK	260-301-02-00	4		
3	BRACKET-SOLENOID	268-337-01-00	1		
4	PLATE-NUT	268-338-01-00	1		
5	COUNTER, BATCH	268-364-BG-01	1		
6	HOSE, 12 IN LENGTH	53209-006	1		
7	HOSE, 13.5 IN LENGTH	53209-007	1		
8	TECH PUB INSTRUCTION	TP10330	1		



DESCRIPTION: BATCH COUNTER KIT
UNIT NAME: 714XLT BATCH COUNTER KIT

ASSEMBLY NUMBER:
268-322-BG-01

REV:
SHEET 2 OF 2



DESCRIPTION: BATCH COUNTER
UNIT NAME: 714XLT BATCH COUNTER KIT

ASSEMBLY NUMBER:
268-364-BG-01

REV:
SHEET 1 OF 2

268-364-BG-01

ITEM #	PART DESCRIPTION	PART #	QTY.
1	COUNTER, BATCH	268-365-01-00	1
2	PHOTOEYE	268-366-01-00	1
3	PLATE, MTG STUD	268-367-01-00	1
4	SOLENOID VALVE	268-368-01-00	1



DESCRIPTION: BATCH COUNTER

UNIT NAME: 714XLT BATCH COUNTER KIT

ASSEMBLY NUMBER:

268-364-BG-01

REV:

SHEET 2 OF 2

Baumfolder has authorized dealers located throughout the United States.

Call toll free, **1-800/543-6107** for parts or the number of your nearest authorized dealer.

BAUMFOLDER

CORPORATION

Quality Bindery Equipment Since 1917

1660 Campbell Road
Sidney, Ohio 45365-0728
Phone: 937/492-1281 or 800/543-6107
Fax: 800/452-0947
Internet: www.baumfolder.com
E-mail: baum@bright.net

