



BAUMFOLDER
SOLUTIONS

**Century Series PFP1000
Modular Solution**

Building Precision Solutions

Solutions That Capture Value

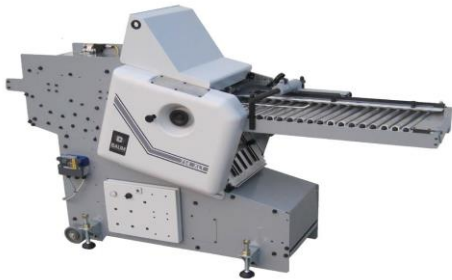
Offline
Feed/Fold/
Wrap/Stack



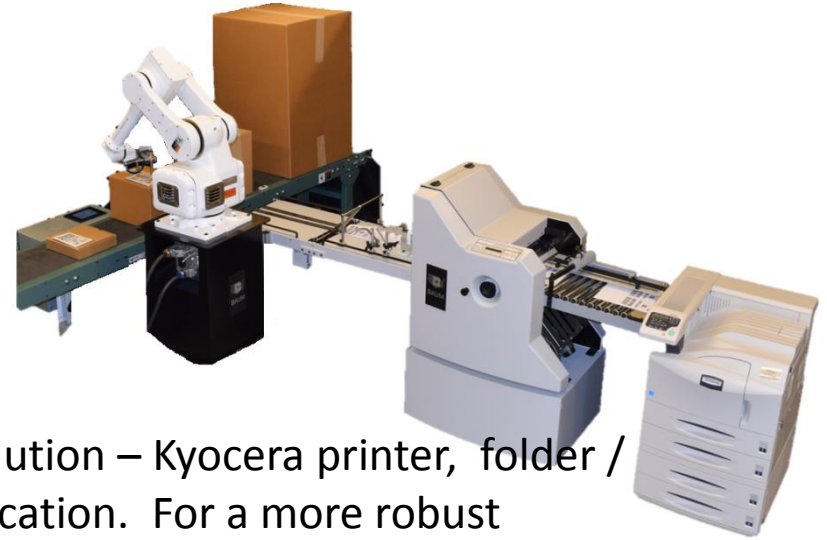
On-demand
Print/Gather/ Fold/
Timed insertion / with
barcode verification



On or off line folder and
timed box insertion system



[Baumfolder YouTube](#)
right click to watch video



15 per minute solution – Kyocera printer, folder /
Robotic box application. For a more robust
20 plus per minute we use a Konica printer.



BAUMFOLDER
SOLUTIONS

**STRATEGIC
PARTNERS**

Scherpenzeel

supporting your core business

Core-TeQ

supporting your core business

YASKAWA

 **KONICA MINOLTA**

 **prosource**
Office Equipment | Document Automation | Technology Solutions



BOSCH

RPM
Packaging
Incorporated



KONICA MINOLTA

bizhub PRESS 1250P Series Value Add



- At up to 125 impressions per minute (7,500 per hour), the bizhub PRESS 1250P series has the speed to handle long-run digital printing quickly thus reducing job turnaround time.
- Vacuum Feed system provides press type flexible stock handling while enabling operators to better manage their time. 100% rated speed on heavy stocks PLUS light stocks without jams. Versus traction/roller fed on other competitive systems.
- Large capacity “user adjustable” paper drawers. Handles a variety of sizes and paper weights to add to your flexibility of substrates.

- Standard with 2 - 1500 sheet drawers and the option of adding up to two additional paper cabinets and a total capacity of 13,000 sheets!
- High Yield Simitri Toner (137K @ 5% fill) Less down time! TRUE 1200 X 1200 dpi for unsurpassed fine line quality.
- Less downtime with Auto Refining technologies. Reduces service frequency for preventive maintenance calls and insures highest level of quality, consistently.
- User Friendly 15.5” Full Colour Display . Large user interface for easy multitasking and less training.
- Lightning fast (2.8 GHZ, 250 GB HDD, 2 GB memory) Konica Minolta’s OWN controller. Designed from the ground up to integrate seamlessly to unit and customized by Baum and Konica Minolta to your workflow.

FS-9530DN



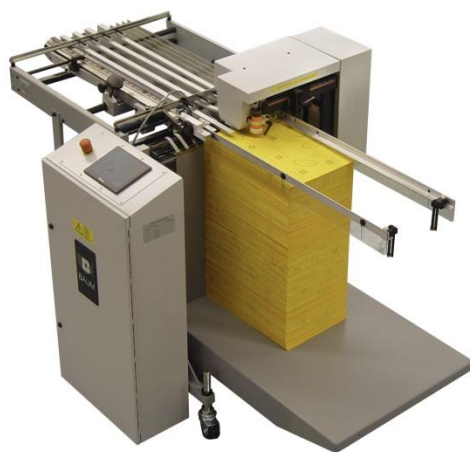
- Fast Output Speed of 51 Pages per Minute
- Standard Network Interface
- Standard Duplex
- Standard 1,200 Sheet Paper Capacity
- Optional Paper Handling and Finishing
- USB Host Printing for Convenient PDF
- Output Optional Data Security Kit for Added Document Security
- Secure Printing and Job Storage
- Long Life Consumables

On or Off-line Feeding solutions

Feeding solution: Independent Pile and Continuous Feeders to meet multiple production applications in many different environments. These affordable and robust feeders can be used for such applications as feeding timed packaging lines, UV coaters, die cutters, laminators, digital print engines, ink jet bases, mailing tables, and more. High volume feeders can feed most material from single sheets to catalogues with optional stream feeder it can feed on demand into any application.



Continuous Feeder,
sheet size 21x31



Pile Feeder
Sheet size 21x31



High volume feeder with
optional Stream feeder,
Sheet size 14x3, product
thickness 2 to 72 pages can
load up to 8 feet of product

Folder / Gatherer / Plow fold options (after print or feed)



Baum folders are designed to be an integral part of a complete high-speed electronic printing solution. For continuous, non-stop folding for documents printed on blank or pre-printed continuous rolls of paper, as well as for blank or preprinted fan-folded continuous documents.

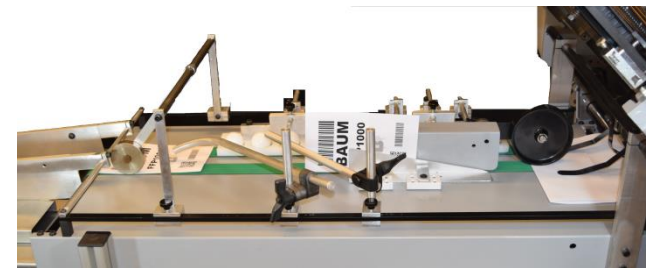


Gatherer is designed to gather sheets from 1 to 12 from the print engine or feeder. A signal releases the sheets to the fold section.



Gatherer system

Plow fold offer a solution to fold in a smaller foot print and varying folds types for most solutions.



In-line plow folder

Printed material in sealed pouch for box applications

Pack 101

Flexible horizontal flow wrapper



Packaging Line Structure

Product Handling

Pick & Place Distribution Feeding

Horizontal Flow Wrapping

Primary Packaging Multipack

Pack 101

Secondary Packaging

Top Loading Cartoning Case Packing

- 1: Infeed with stainless steel product contact surfaces
- 2: Optional fixed former and 2-up cutting head
- 3: Touchscreen with intuitive icon driven navigation



Standard Features

- ▶ Basic handfed design infeed conveyor
- ▶ Stainless steel product contact parts
- ▶ 1 film reel holder capable of holding up to a 650 mm film reel
- ▶ One adjustable former
- ▶ Two sets of finwheels
- ▶ 1 set of rotating crimper jaws
- ▶ WinPack Core PC control using a Windows CE operation system and 7" touchscreen
- ▶ Pre-programmable controls for up to 20 recipes
- ▶ 1.5 m infeed conveyor

Specifications

Product Range	Min.	Max.
Product length	76 mm (3")	457 mm (18")
Product width	12 mm (.5")	250 mm (9.8")
Product height	6 mm (.23")	110 mm (4.3")
Film reel		
Reel diameter		max. 400 mm (15.7")
Reel width		max. 650 mm (25.6")
Reel weight		max. 35 kgs (77 lbs)
Inner core diameter		70 or 76 mm (2.8/3")
Film sealing		
Fin seal height		12 mm (0.5")
Cross seal width		20 mm or 25 mm (.8/ .98")
Capacity		
Max. Capacity (1-up)		90 ppm
Max. Capacity (2-up)		150 ppm
Max. Film speed		30 m/min (1,181"/min)

Gluing applications



D10-E

Gear Pump Hot Melt Unit

The D10-e Series Unit is ideally suited for a range of sectors within the packaging, paper converting, graphic arts, nonwovens, and product assembly industries with spray, ribbon coating, direct contact, and high-speed jetting adhesive dispensing guns.

- Utilizes a large, reliable 1/4 horsepower motor
- Large capacity gear pump delivers 60 lbs/hour
- Teflon® coated tanks reduce char build-up for easy maintenance and reliable operation
- Features independent, redundant, over-temperature circuits and system over-pressure protection for safe operation
- 100% Compatibility with industry standard hoses and guns
- Minimizes adhesive degradation and permits precise, uniform patterns with an independent control of each heated zone (up to 5)
- Compliant with major approval codes worldwide



High speed document applications



The MPK2F and MPK2F-5 are high-performance 5-axis robots designed for high-speed picking and case-packing applications. Ideal for placing product into a deep case. The FS100 is a powerful controller with unmatched open software architecture.

Fast, Flexible and Compact

- Ideal for high-speed picking, kitting and cartoning of food and consumer goods.
- 900 mm horizontal reach provides largest work envelope in its class.
- Payload capacity for the MPK2F is 2 kg, the MPK2F-5 is 5 kg. Both models have ± 0.5 mm repeatability.
- Compact, slim arm design allows reach into confined spaces, improving system productivity. Deep work envelope provides flexibility for a range of applications.
- Hollow arm design allows cables and hoses to be run internally throughout entire robot from base to wrist which improves reliability.
- Wrist speed of 2,000 degrees per second provides maximum productivity, even when parts need to be rotated.
- IP67 robot. Rated for washdown cleaning (when optional covers are installed), even with certain caustic cleaners.
- Ready for food applications with National Sanitation Foundation (NSF-H1) certified food-grade grease.
- MPK2F: floor-, ceiling- or wall-mounted; MPK2F-5: floor- or ceiling-mounted.



FS100 Controller

- Small, compact controller.
- 470 mm wide, 200 mm high, 420 mm deep.
- Designed for packaging and small parts handling robots with payloads of 20 kg and under.
- Compatible with integrated MotoSight™ 2D vision and conveyor tracking (optional).
- Improved communication speeds and functionality.
- High-speed I/O response and high-resolution timers.
- Open architecture enables software customization in widely accepted environments such as C, C++, C# and .NET.
- Uses same programming pendant hardware as DX100 controller, providing a consistent programming interface with current products.
- Enabled for MotoPick™ scheduling software.

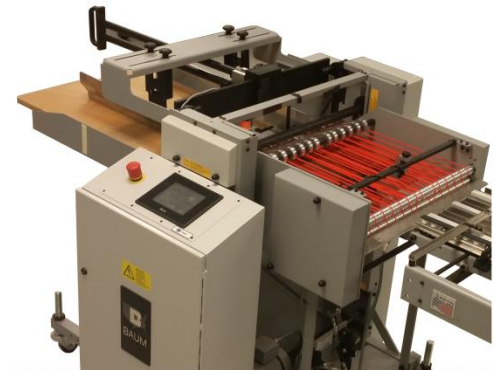
Baumfolder solutions

- Feeding/ Loading
- Material Handling
- Vacuum and custom conveying
- Stacking
- Inspection Systems
- Automated Assembly Systems
- Food Processing
- Special applications
- Custom build

Modular design to meet customer applications



Registration / inspection conveyor



Receding Stacker



Designed and built custom electrical boxes



In-line slitting / scoring

Rugged, Reliable, and Made in the USA

Service – After the solution is delivered, WE WILL SUPPORT YOU.

“Together we can do more than individual companies apart.”



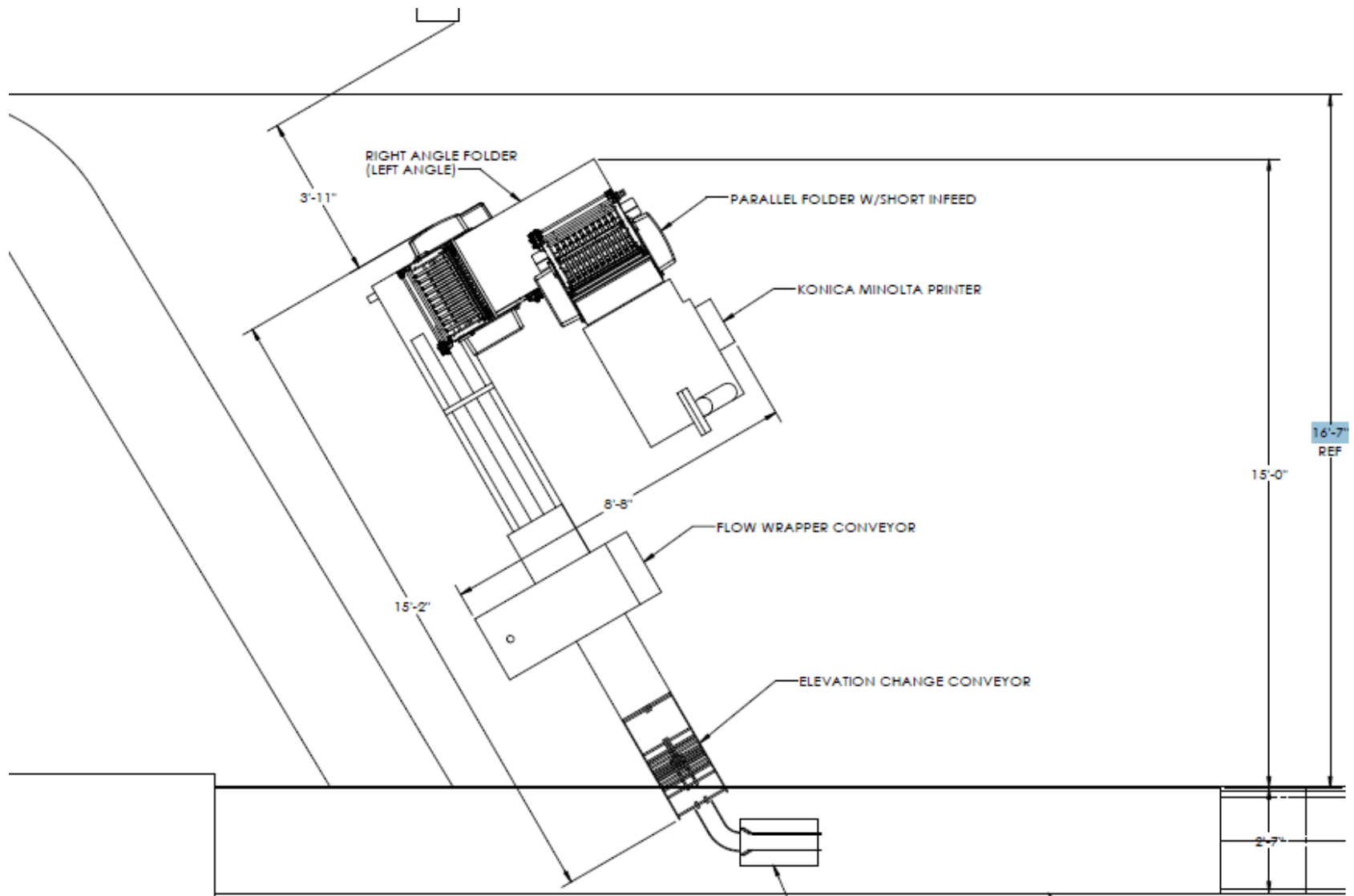
We have fully staffed technical support, service parts, shipping, and product management team who have received multiple achievements on customer satisfaction.



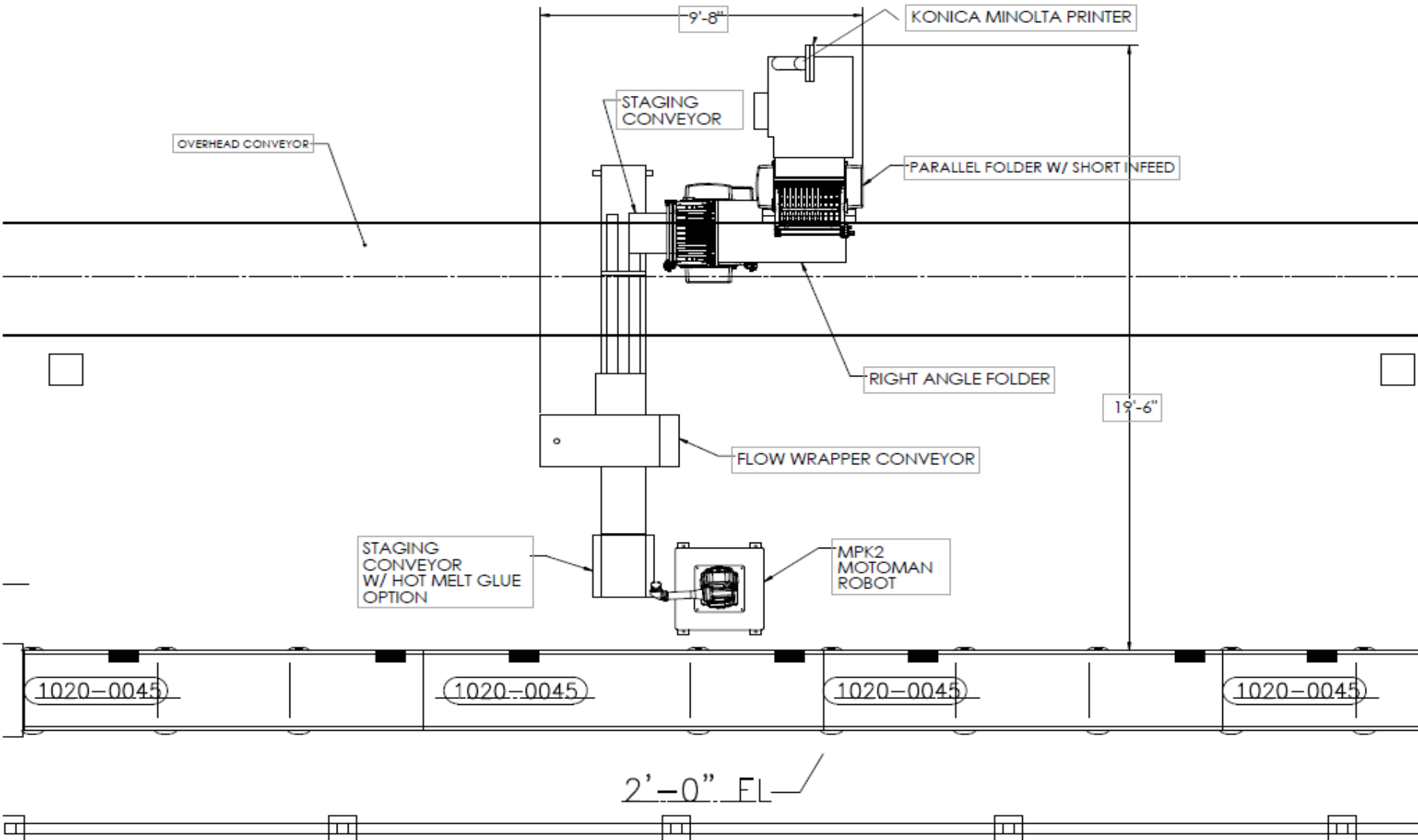
Our team of experts are here to assist you with any of your parts and service needs.



Sample Layouts

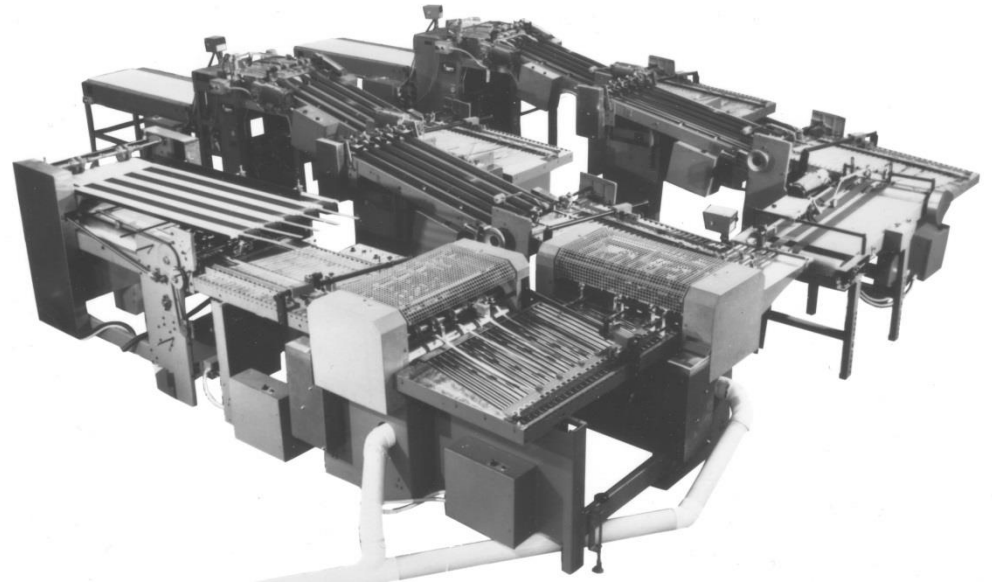


Sample Layouts



For almost 100 years...

From our beginning in 1917, our company has focused on product innovation, performance and support. Today, our multi-talented team, innovative designs and efficient production environment come together to make Baumfolder Corporation your one-vendor solution to efficiency



Bureau of Engraving. Yes we designed the equipment that your money is made on.

OUR PROMISE

We are motivated to remain at the forefront of innovation;
to produce solutions, to deliver on time and to achieve
ever-greater heights of customer satisfaction.

-Janice Benanzer
President / CEO



Building Precision Solutions
Learn more at baumfolder.com

Baumfolder Corporation
1660 Campbell Road, Sidney, Ohio 45365

937.492.1281 or 800.543.6107 (p)
937.492.7280 (f)

Baumfolder@baumfolder.com



Owned by Heidelberger Druckmaschinen AG