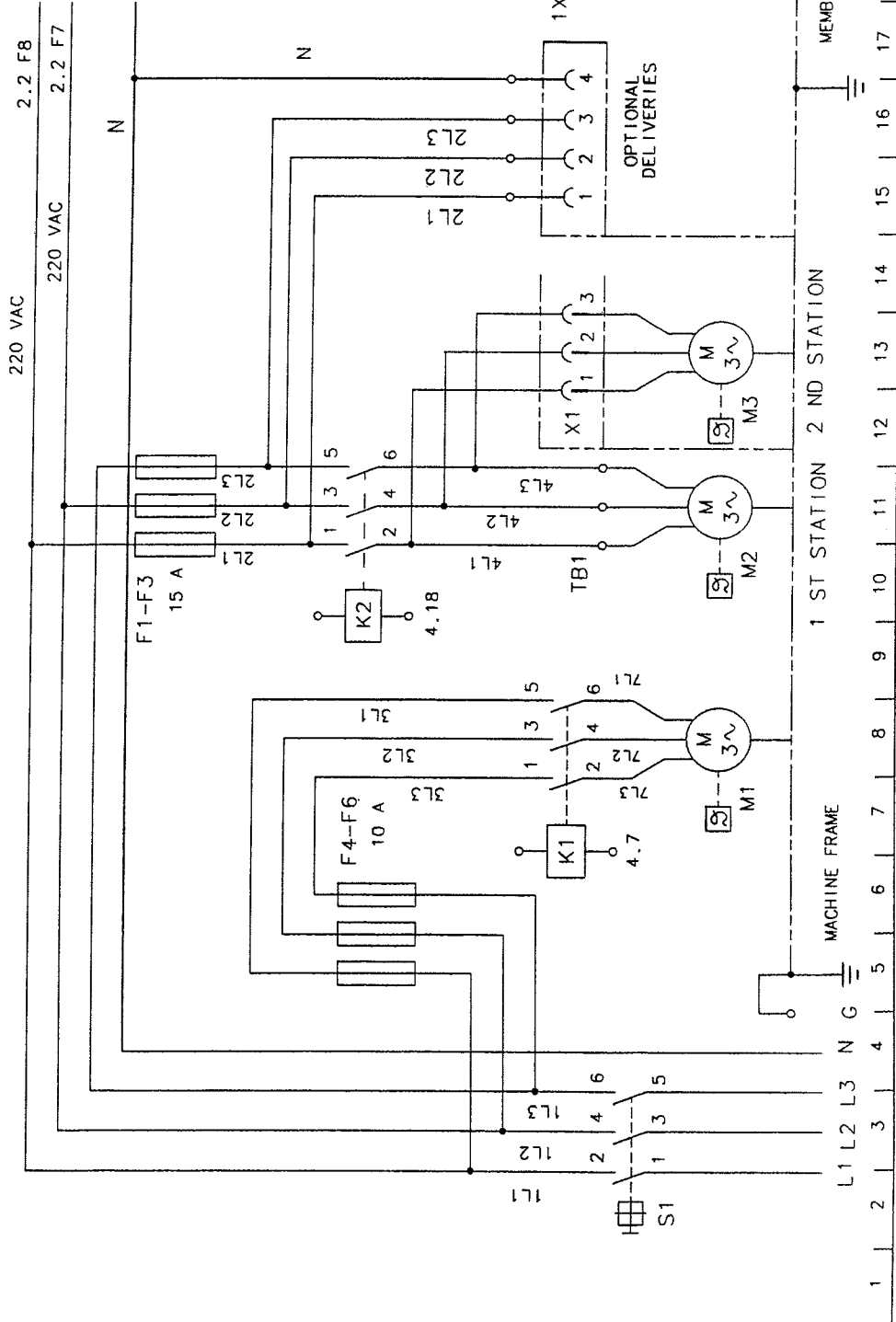


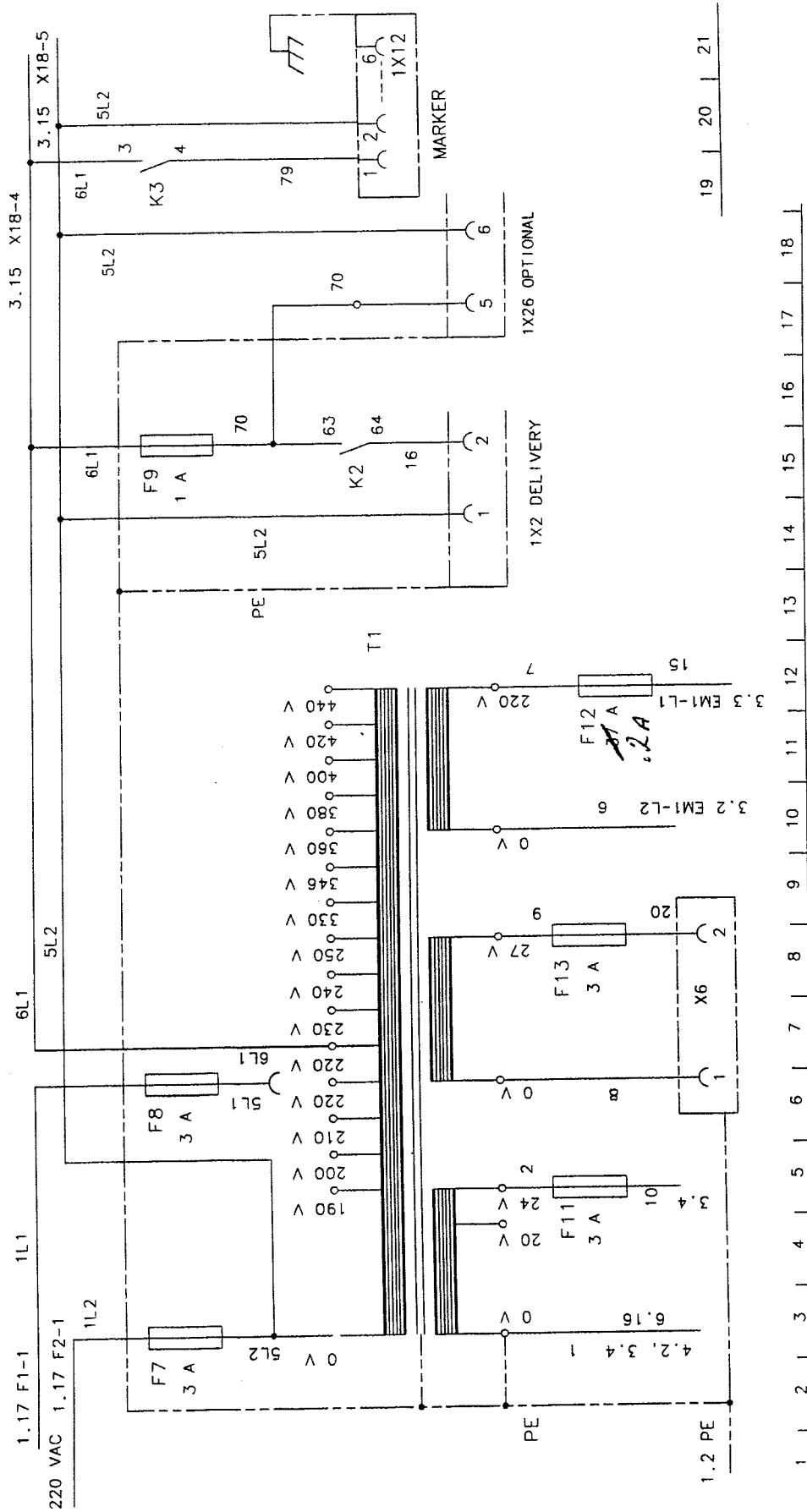
PUMP

DRIVE



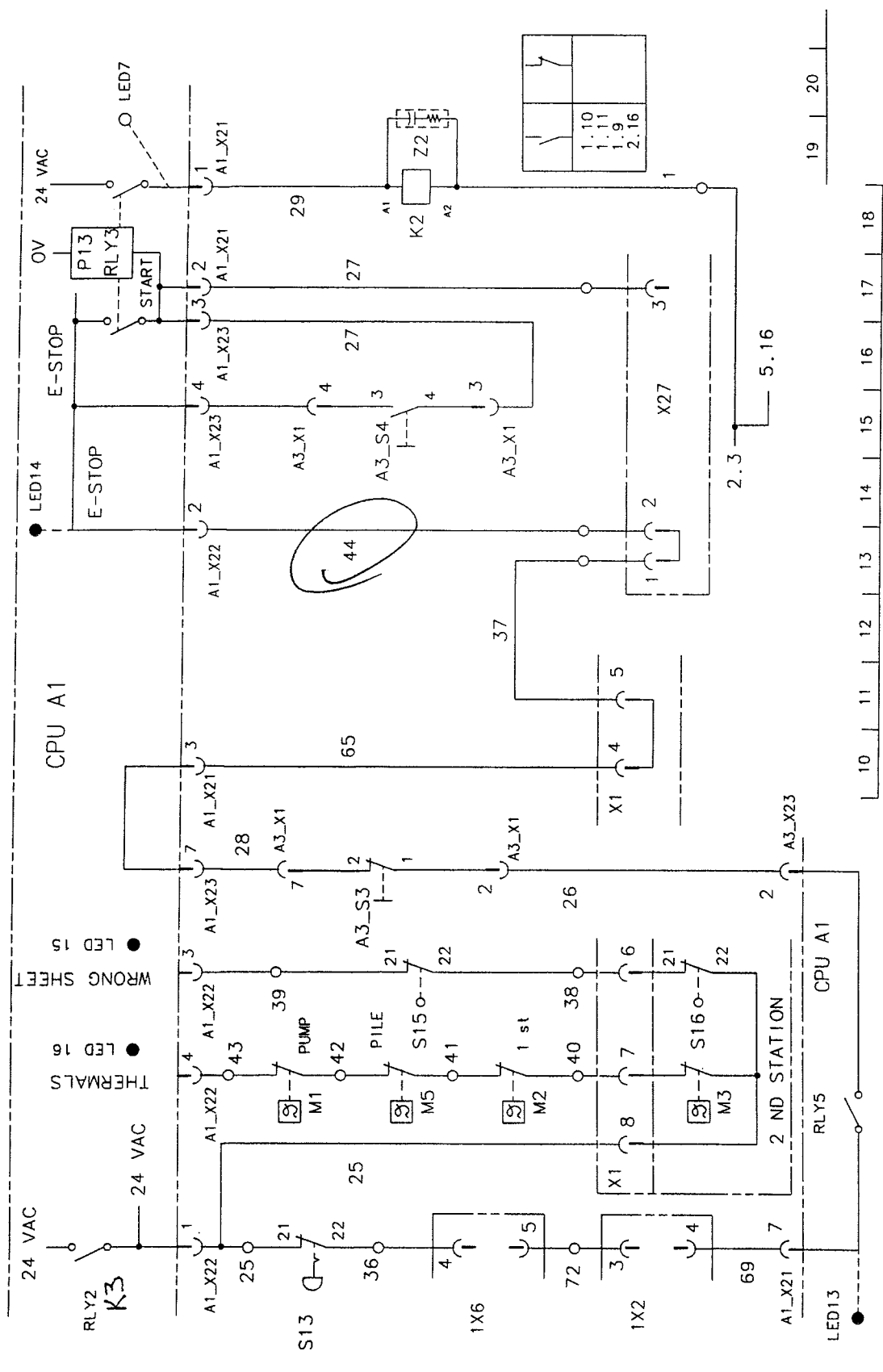
SYSTEM SCHEMATIC
262-050-00-11

CONNECT WIRE 5L1 TO APPROPRIATE TRANSFORMER TAP TO MATCH THE CUSTOMERS POWER SUPPLY.



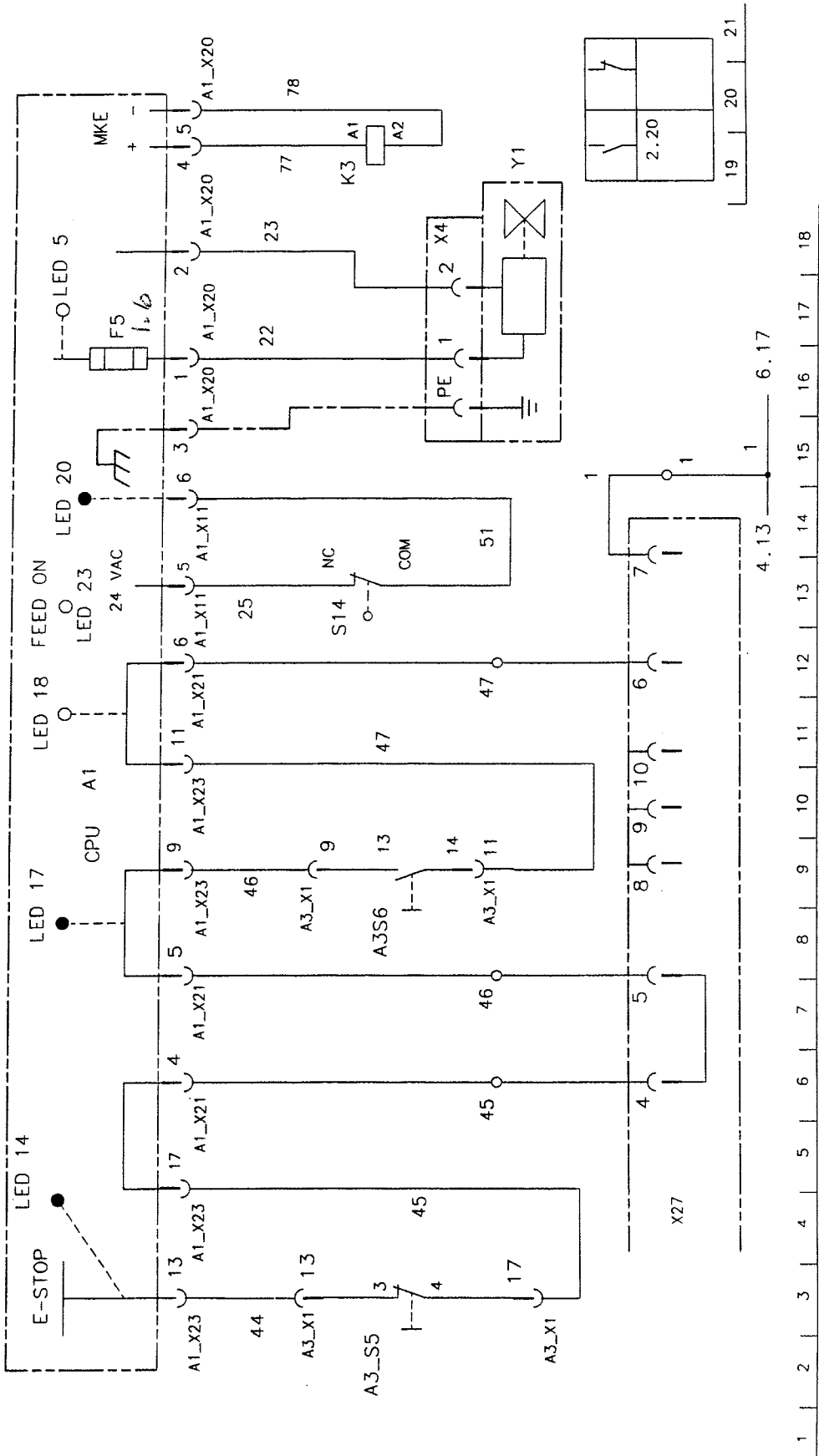
SYSTEM SCHEMATIC
262-050-00-12

NOT-AUS ANTRIEB STOP ANTRIEB START ANTRIEB
 EMERGENCY STOP DRIVE STOP DRIVE START DRIVE
 ARRET D'URGENCE COUPE ENTRAINMENT STOP ENTRAINMENT MARCHÉ ENTRAINMENT



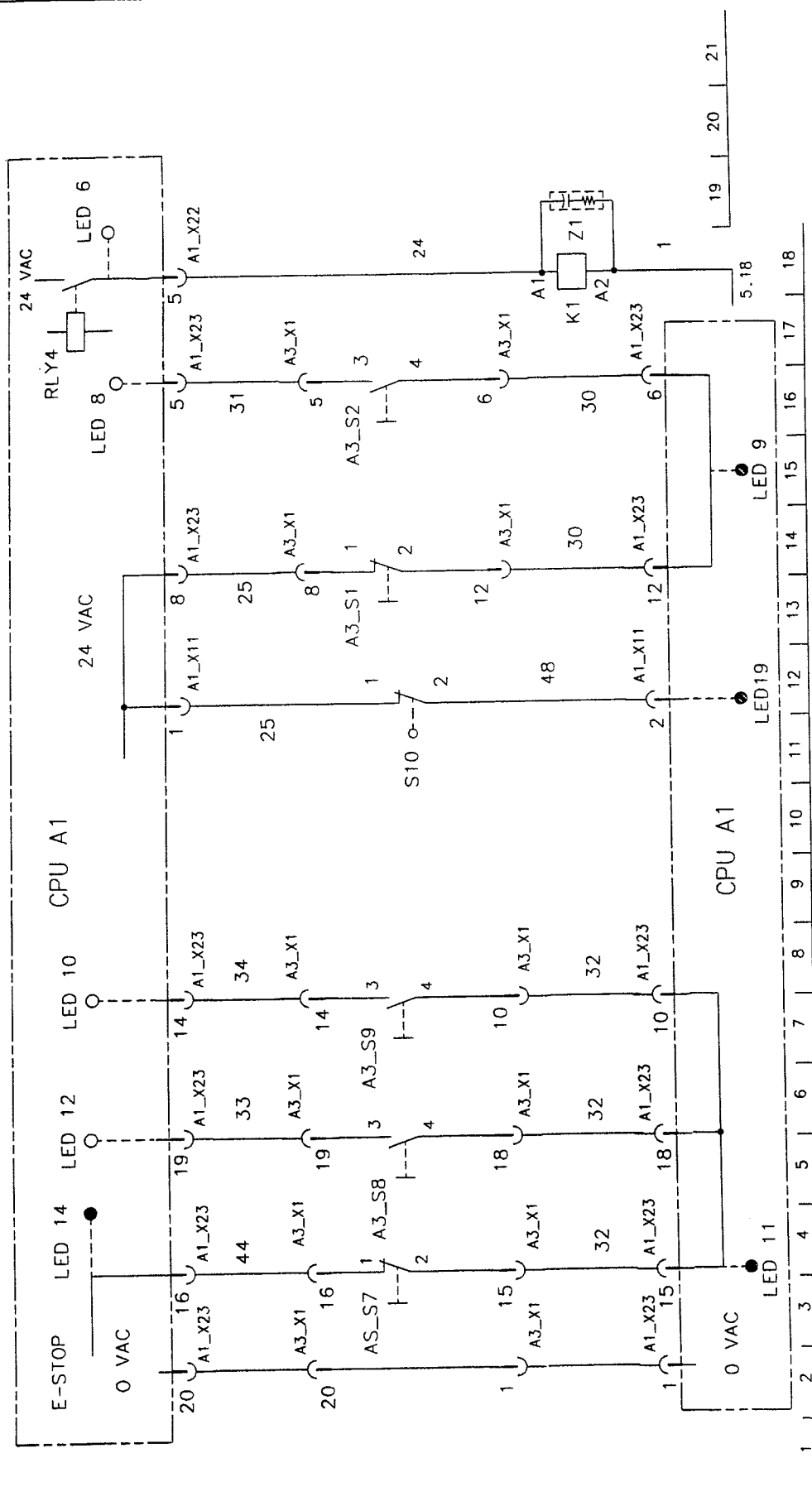
SYSTEM SCHEMATIC
 262-050-00-14

BOGEN STOP	BOGEN START	DOPPELBOGENSPERRE	SAUQUENTIL
SHEET STOP	SHEET START	DOUBLE SHEET DETECTOR	VACUUM SOLENOID
ARRET FELLILLES	DEPART FELLILLES	CONTROL DOUBLE FELLILLE	BATCH



SYSTEM SCHEMATIC
262-050-00-15

STAPEL PILE PILE		HUBEN UP		MONTER		PUMPE PUMP PUMPE	
STOP	SENKEN	HUBEN	STOP	START	ANTRIEB	STOP	START
STOP	DOWN	UP	STOP	START	DRIVE	STOP	START
ARRET	DESCENRE	MONTER	ARRET	MARCHE	ENTRAINNEX T	ARRET	MARCHE

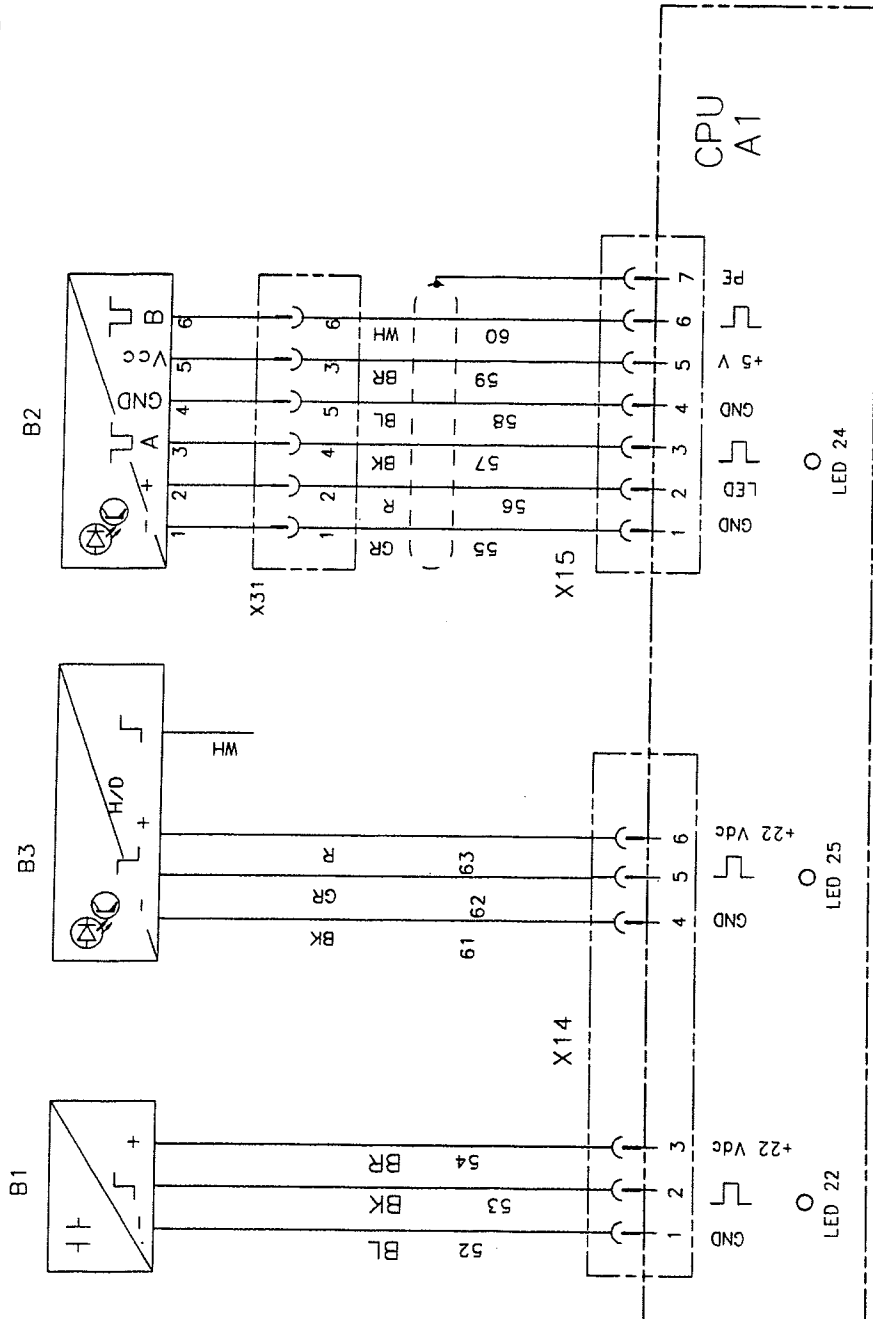


SYSTEM SCHEMATIC
262-050-00-16

PILE
SENSOR

SHEET
COUNT
SENSOR

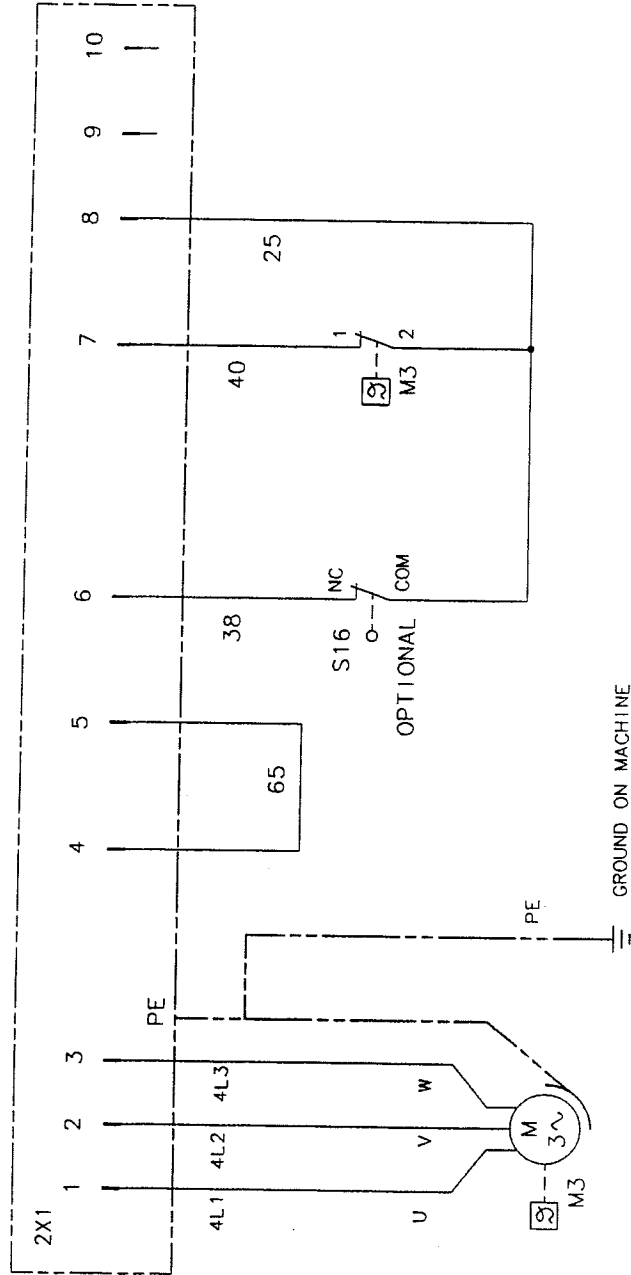
SPEED
COUNT
ENCODER



1 | 2 | 3 | 4 | 5 | 6 | 7 | 8 | 9 | 10 | 11 | 12 | 13 | 14 | 15 | 16 | 17 | 18 | 19 | 20 | 21

SYSTEM SCHEMATIC
262-050-00-17

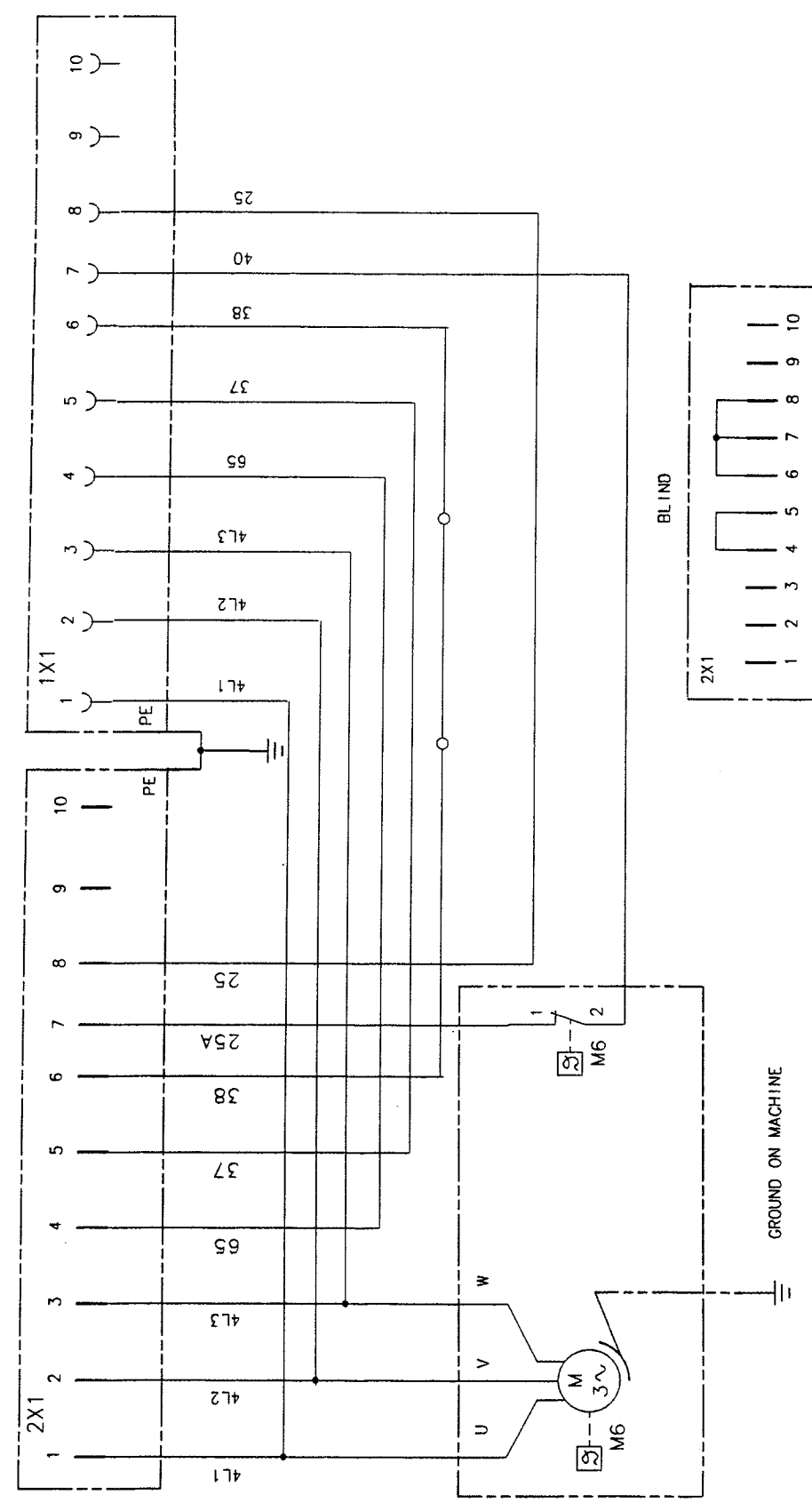
ANTRIEB	FEHLERBOGEN	THERMOKONTAK
DRIVE	WRONG SHEET	THERMAL
ENTRAÎNEMENT	FEUILLE DEFECTUEUSE	



2nd STATION SCHEMATIC
262-050-00-19

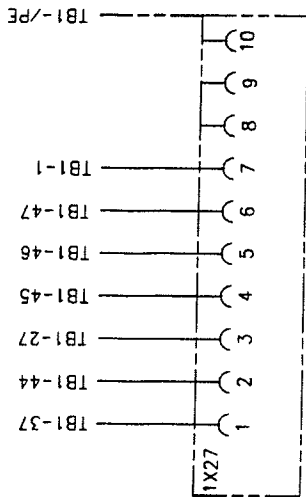
ANTRIEB
 DRIVE
 ENTRAINMENT

2nd STATION CONNECTOR

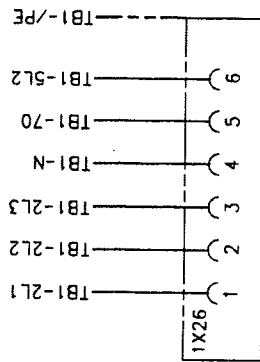


3rd STATION SCHEMATIC
 262-050-00-20

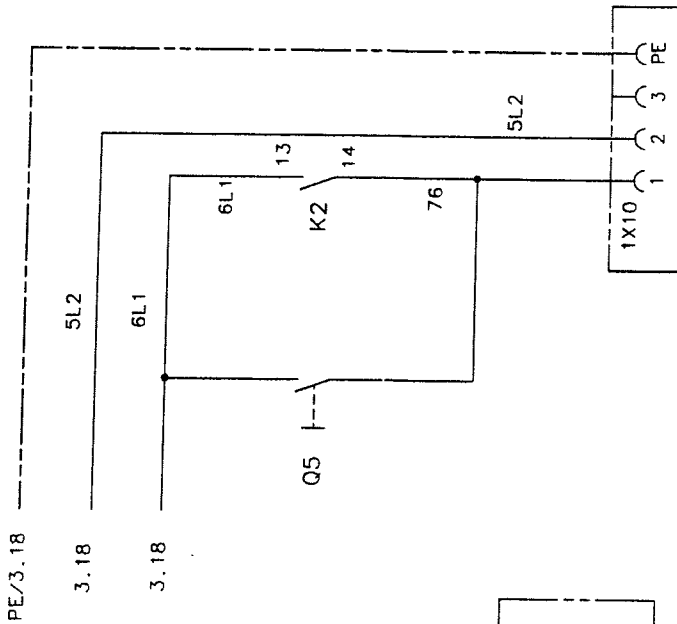
AUSLAGE - STEUERUNG
 DELIVERY - CONTROL
 SORTIE - REGLAGE



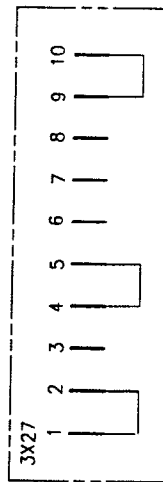
AUSLAGE - VERS
 DELIVERY - POWER
 SORTIE - ALIM
 OPTIONAL



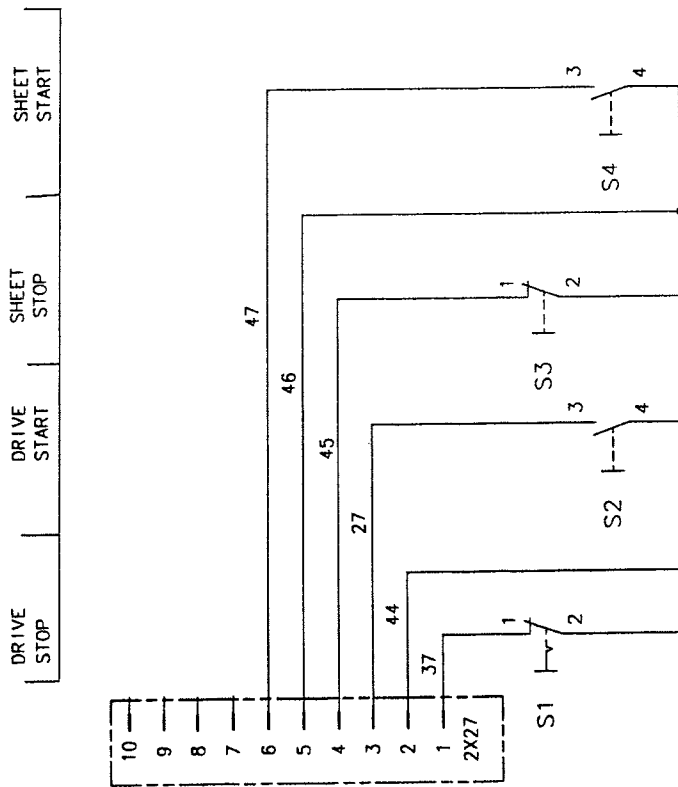
VERSORGUNG FENSTERFALZ/LEIMEN
 POWER SUPPLY GATEFOLD/GLUING
 ALIMENTATION EN COURANT PLI PO



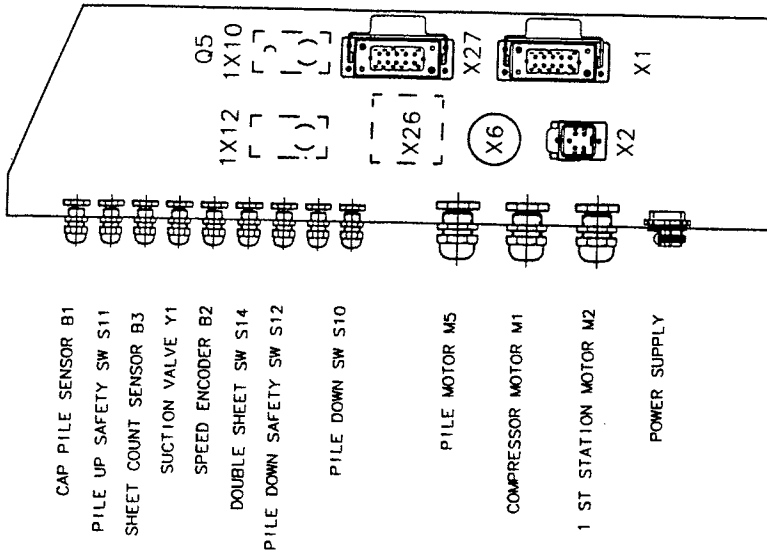
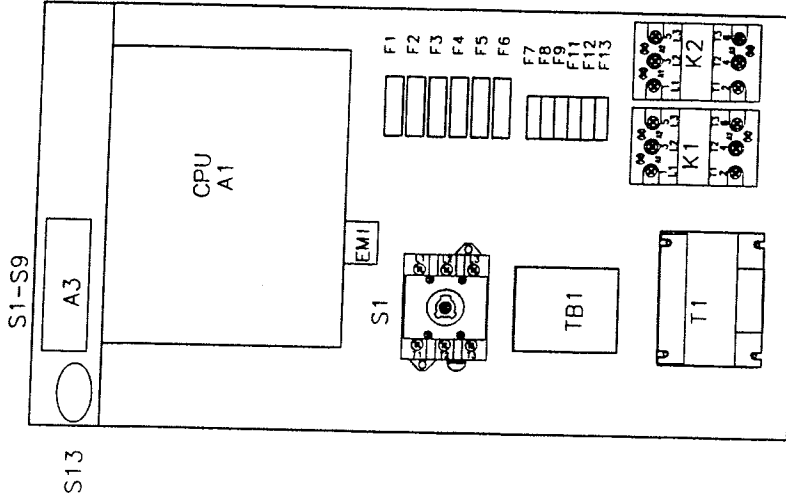
BLINDSTECKER
 BLIND - BYPASS PLUG
 FAUSSE FICHE



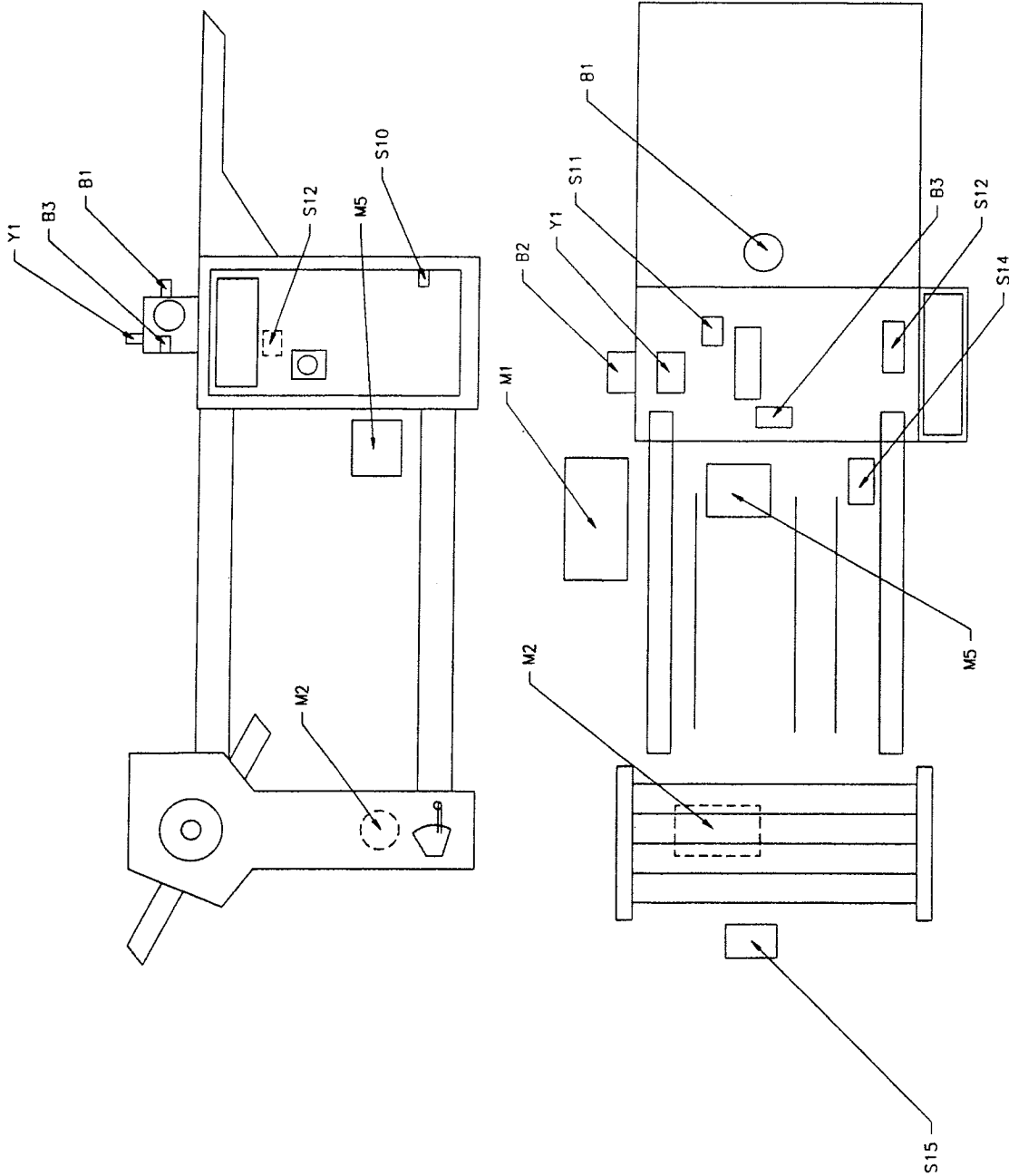
ACCESSORIES SCHEMATIC
 262-050-00-21



REMOTE CONTROL SCHEMATIC
262-050-00-22

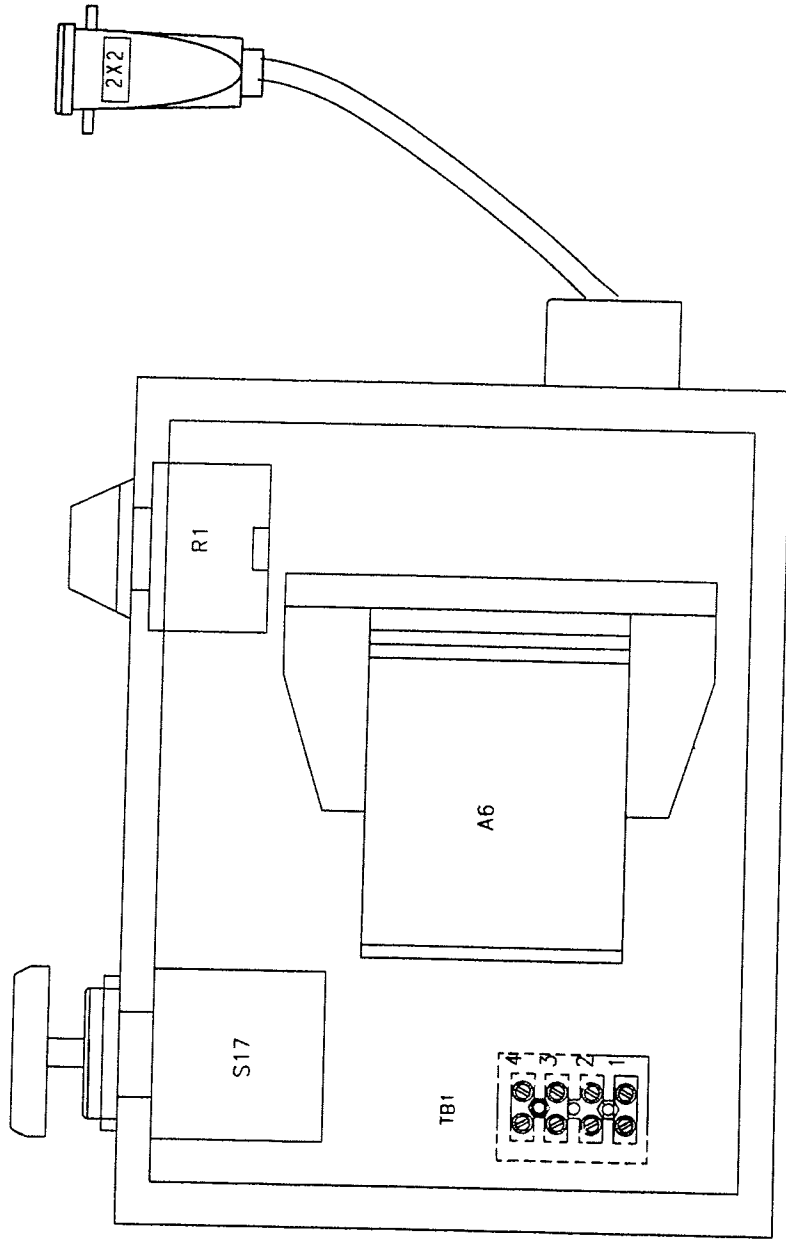


REF DESIG. SCHEMATIC
262-050-00-23

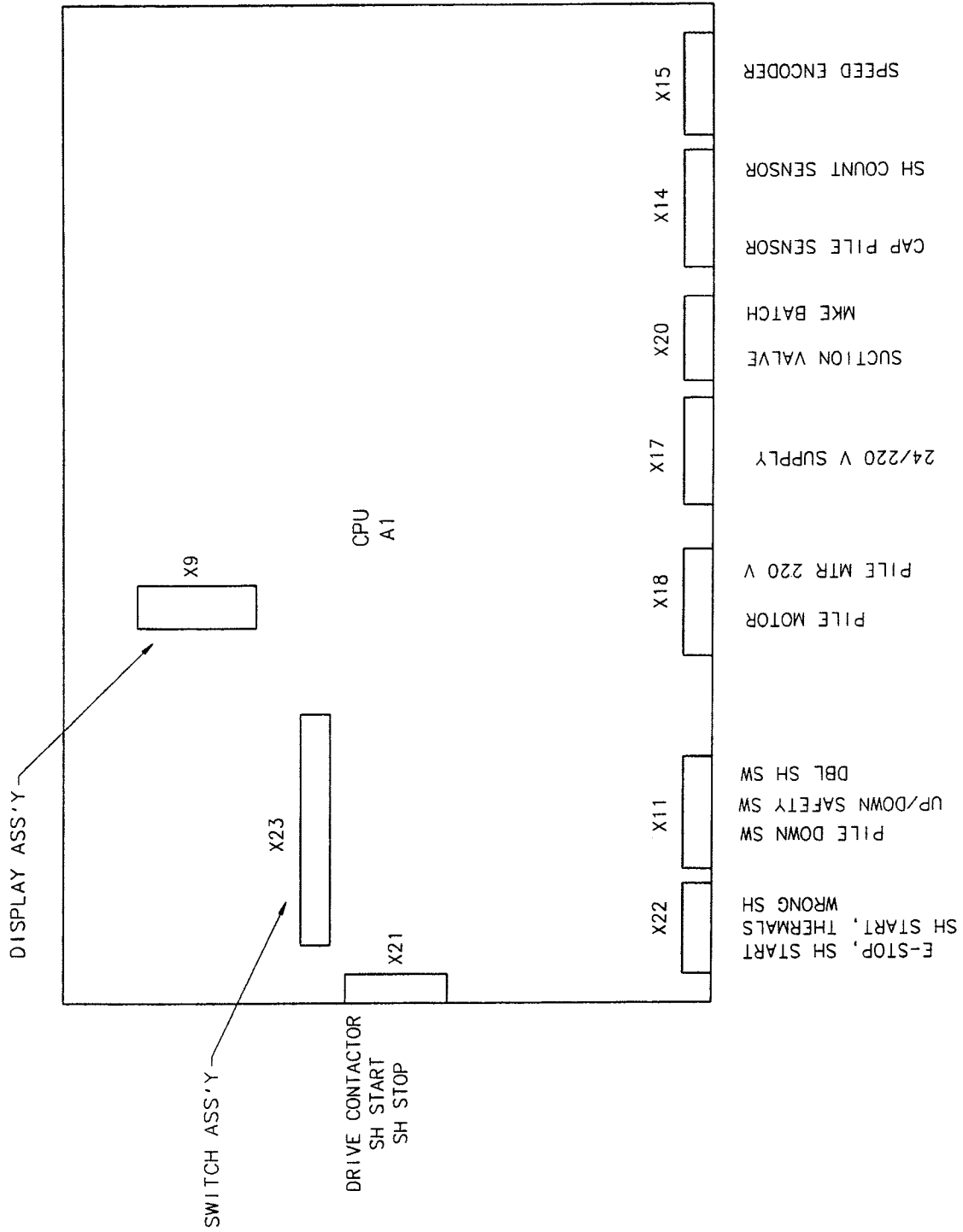


SYSTEM SCHEMATIC
262-050-00-24

AUSLAGE STEUERUNG
DELIVERY CONTROL
SORTIE REGLAGE



SYSTEM SCHEMATIC
262-050-00-25



CPU CONN. IDENT. SCHEMATIC
262-050-00-26