



BAUMFOLDER

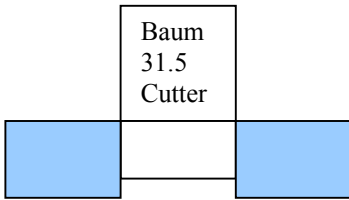
Baum A2 Air Side Table Installation Instructions



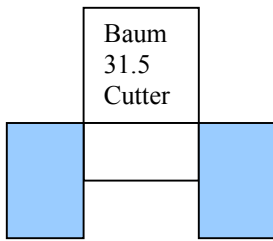


BAUMFOLDER

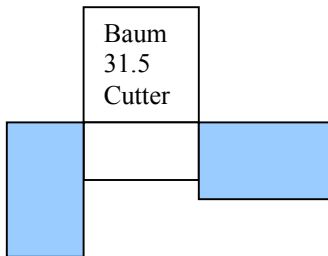
1. Determine layout configuration of tables that is best for workflow and available floor space. Choose from the following configurations:



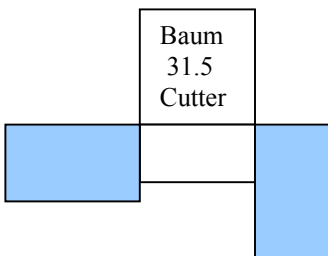
Configuration **A**



Configuration **B**



Configuration **C**



Configuration **D**

2. Prepare BaumCut cutter to receive Baum A2 air side tables.

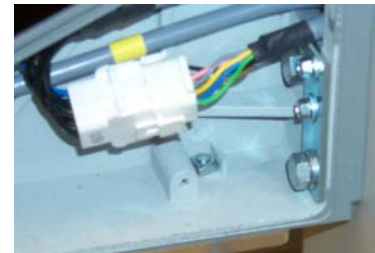
- Remove standard side plates from RH and LH side tables existing on cutter.



- Remove standard RH and LH side tables and lower support bracket. Note that a tie plate is connecting the side tables to the main table and must be unfastened also.



- Remove side covers on safety beams and install Plexiglas side shields. Note that square nuts fit inside molded area.



- Use (2) straight slotted pan head screws and (2) square nuts from hardware kit to mount. Square nuts are located inside of safety beam housing. Pan head screws are inserted from below.

Reinstall covers on light beams.

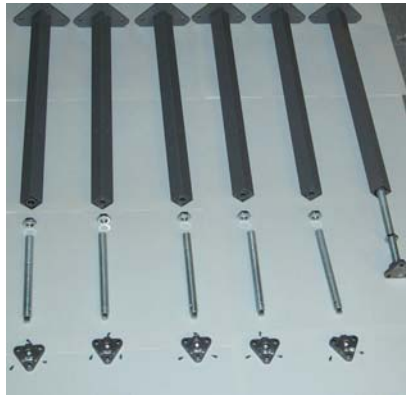


BAUMFOLDER

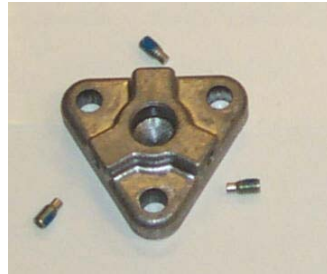
Assemble Legs

Assemble (6) legs using the parts shown. A leg assembly consists of:

- (1) Leg
- (1) Hex nut
- (1) Threaded rod
- (1) Cast foot
- (3) Setscrews



Preinstall the (3) setscrews into the cast foot with the dogpoint in first toward the hole. These setscrews tighten into the groove cut in the threaded rod.



Screw jam nut onto threaded rod. Screw the threaded rod into the threaded end of the leg with the ball end on the exposed end. Fasten the cast foot onto the ball end of the threaded rod and tighten the setscrews. Using a tapemeasure, the total length of the assembly from top of leg to bottom of foot is to be approximately 32-1/8 inches. Do not tighten jam nut.



Note that (3) legs are used for each table.

Tabletop

Lay the tabletop upside down onto a protective surface to avoid scratches.

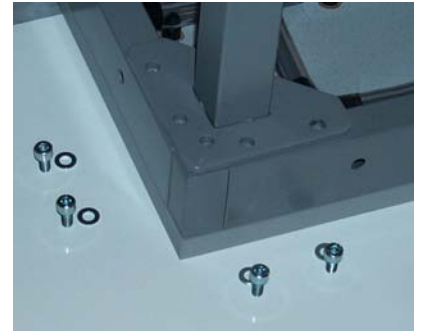


Install the black plastic threaded inserts into the large holes. These inserts are for the large sheet metal stabilizers that fasten to the legs and for the rear plates that extend above the table to aid in jogging. These inserts have a nut inside. Press the insert into the hole with the nut end first. They snap into position. Make sure they are seated flat.

Note that you must now pay attention to the configuration that you will be using to install the inserts into the correct holes. In most configurations (7) inserts will be required per side table.



Note that the leg locations need to match the configuration selected so that the legs are not interfering with the foot pedal and removal of the lower cover on the front of the cutter. Mount the legs to the frame using (4) socket head capscrews and (4) flat washers per leg.



Assemble the thick triangular plate with the square hole in the center to the corner that does not have a leg. This plate is to strengthen that particular corner. Use hardware from main kit.

Rotate the entire assembly upright to prepare for the next step.



BAUMFOLDER

Sheet metal Side Frames

NOTE: These must be installed when a jogger or stacklift is placed next to the air side table as a safety guard to prevent reaching and pinchpoint locations between machines. If a jogger or stacklift is not part of the configuration, the large sheetmetal panels are optional for installation.



Locate the mounting hardware shown.

- (2) Spacers
- (2) Flathead screws, long
- (3) Flathead screws, short



Locate the large sheetmetal frames per the selected configuration and mount to the legs using the spacers and long flathead screws as shown. Note location of jogger and side panel as guard.



Use the (3) short flat head screws to mount the piece to the end of the tabletop. Plastic hole plugs in the hardware kit are to be installed for aesthetics in the holes above the ones used.



Back Plates

Locate the back plates for the tables and the hardware. (4) long hex head screws and (4) flat washers with holes to match these screws are to be used. (2) different lengths of plates are in the kit due to different configuration possibilities. Hardware should be used accordingly.

Locate the back plate and fasten into the black inserts in the tabletop frame as shown.



Locate table into position and insure that the backplate fits underneath the side shield.



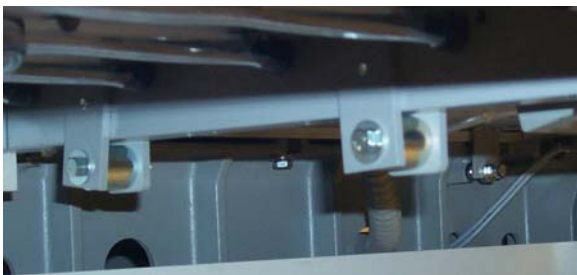


BAUMFOLDER

Fastening Side Tables to Main Table



Locate clamping assemblies and the mounting hardware shown. (2) hex head M10x20mm long screws and (2) flatwashers are required for mounting. (2) clamping assemblies are required for each side table.



The clamping assemblies must be disassembled to install. A sliding nut is already in the main table assembly for the clamping assembly to fasten to.



Be sure to level the side tables flush with the main table and lock the jam nuts on the leveling screws on the legs.

Connecting the Air Supply

Locate the parts for connecting the air supply to the tables.

- (2) Plastic “Y” fittings
- (8) Hose Clamps
- (1) 6” long hose
- (1) 10” long hose
- (2) 42” long hoses
(if the hose is not cut to length, use these dimensions.)

Disconnect the main air hose that is feeding the air supply for the main table at the connection under the main table at the front of the cutter.

Connect the short hose to the main air table as shown.

Connect the main blower supply to the open port on the only opening left on the “Y” fittings. Connect the long hoses to the right and left side tables underneath.

Use tiewraps to fasten hoses neatly underneath tables.





BAUMFOLDER

|
1660 Campbell Rd.
Sidney, OH 45365

For further information call:
1-800-543-6107